

SALT LAKE CITY HISTORIC LANDSCAPES REPORT

Executive Summary

Shipp Park

SLCHLR NO. 12

Shipp Park is located in the Avenues National and Local Historic Districts, Salt Lake City, Utah. It fronts on 4th Avenue and is located between H and I Street at 579 East Fourth Avenue. The park is not considered historic in and of itself, but instead in recognition of its namesake Dr. Ellis Reynolds Shipp, who was one of Utah's first female doctors. Dr. Shipp did not live in the home that once stood on the site. She resided and practiced medicine from a residence on 2nd Avenue a few blocks from this park. Shipp established her career in Salt Lake City, and in 1878 founded a school of training for obstetrics and nursing.

The small, quarter-acre park was established as a neighborhood pocket-park in 1987 within a well-established, verdant residential neighborhood that is characterized by single-family homes and low-density apartments, including historic residences which flank sides and rear of the park, with additional historic structures facing the park from on the opposite side of 4th Avenue, which is also the main entrance into the park. The terraced site is located in an area with significant south-to-north upward grade, which is a common characteristic of the Avenues neighborhood terrain. The park is divided into two character-defining sections - the Entryway and the Playground.

SALT LAKE CITY HISTORIC LANDSCAPES REPORT

Shipp Park

SLCHLR NO. 12

Location: Shipp Park is located within the Avenues National and Local Historic Districts, Salt Lake City, Salt Lake County, Utah. It fronts on 4th Avenue and is located between H and I Street at 579 East 4th Avenue (see figs. 1-2).

Latitude: 40° 46'26.76" N, 111° 52' 19.74" W (southwest corner of the park, Google Earth)

Significance: The Shipp Park landscape is not considered historic in and of itself (Landscapes 6), although it is significant as a result of the recognition it provides to its namesake Dr. Ellis Reynolds Shipp, one of Utah's first female doctors who established her career in Salt Lake City and in 1878 founded a school of training for obstetrics and nursing.

Description: In 1987 Shipp Park was established as a neighborhood pocket-park (Landscape 6). The quarter-acre park is nestled within a well-established, verdant residential neighborhood characterized by single-family homes and low-density apartments, including historic residences which flank sides and rear of the park, and look upon the park from across the street. Access to the park is from 4th Avenue. The terraced site is located in an area with significant south-to-north upward grade, which is a common characteristic of the Avenues neighborhood terrain (see figs. 3-5).

As illustrated in the accompanying site map and described below, the park is divided into two character-defining sections (see fig. 6):

Section A – Entryway

The entrance to Shipp Park is defined by a replica of a Victorian-era wrought iron fence mounted on a low concrete retaining wall along the length of the street frontage. A low hedge of Lodense Privet (*Ligustrum vulgare* 'Lodense') is planted in front of the fence. A staircase leads through the main gates, where a pair of Radiant Crabapple trees (*Malus* 'Radiant') are planted in rectangular patches of grass on either side of the entrance gate. The trees flank the sides of a concrete sidewalk leading to a second staircase to the north. A second shrub border of Otto Luyken Laurel (*Prunus laurocerasus* 'Otto Luyken') is planted in front of a second low concrete retaining wall (see figs. 7-8).

An accessible entrance ramp into the park is located to the west of the main entrance along 4th Avenue. The ramp ascends to the north and is bordered on the east and west with rows of William Penn Barberry (*Berberis gladwynensis* 'William Penn'). The ramp eventually turn east, meeting grade with the second set of stairs from the main entrance (see figs. 9-12).

To the west near the entrance into the playground is a plaque identifying and providing interpretive information on Dr. Ellis Reynolds Shipp. A Cleveland Maple tree (*Acer platanoides* 'Cleveland') and a mass of Dwarf Pink Bridal Wreath (*Spiraea Bumalda* 'Anthony Waterer') frame the plaque (see figs 13-14).

Section B – Playground

The playground is located in the center of a north-south running central axis. The playground is composed of three pieces of play equipment, including a two single-person spinner tops and a simple set of swings. The play area is surfaced with a bed of engineered wood chips which provide a safe fall surface. Two decorative metal benches are located on either side of the entrance along the south side of the playground in symmetrical fashion, each mounted onto a concrete pad (see figs. 17-18).

The playground is surrounded by a retaining wall and chain-link fence to the west and a concrete retaining wall and wooden fence to the north. Mentor Barberry (*Berberis mentorensis*), Burkwood Viburnum (*Viburnum Burkwoodi*) and Bigleaf Periwinkle (*Vinca major*) border the east and west fences. Beyond the playground to the rear of the park is a moderately-steep grassed slope. Two Maple trees (*Acer sp.*) flank the east and west grassed area (see figs. 19-22).

To the east is located a playground informational sign and additional decorative metal bench. The sign reads:

“WELCOME. This unique play area is designed for children 2 to 5 years of age. Adult supervision is recommended. KOMPAN. kompan.com.” (see fig. 23)

History:

Located in the northeastern extents of the City on a sloping bench of the Wasatch Mountains, the Avenues Neighborhood extends from downtown Salt Lake City to the south and west, and the University of Utah to the east. The neighborhood is named after the closely laid out grid of blocks separated by numbered, west-to-east running roads called *Avenues*, and the north-south running "Streets" that slope up the steep hillside, which are named after the letters of the alphabet.

Unlike the original ten-acre (435,600 square foot) block grid pattern in the valley below, the Avenues layout deviates from the “Plat of the City of Zion”, the blocks here half of the dimension of the standard City grid - 330 by 330 feet in dimension and 2.5 acres (108,900 square feet) in extent. The streets and sidewalks are narrower as well, resulting in a poor connection with the ten-acre blocks and associated streets on the south side of South Temple Street. Originally, all of the north-south streets were named for trees, and the first four east-west avenues were named "Fruit", "Garden", "Bluff", and "Wall". For example, 4th Avenue where Shipp Park is located was originally named Wall Street (see figs. 24-25) (Haglund 3).

By 1885 the north-south streets gained their current alphabetical designations (A Street through V Street, although V was eventually changed to Virginia Street). The east-west running avenues were still known as streets until 1907, when they were officially retitled.

As a site, Shipp Park has no known historical significance. Sanborn maps from 1911 and 1950 illustrate the location and demolition of a one-level framed dwelling and detached outbuildings respectively. Salt Lake County archival tax assessment documents the earliest property owners as William W. and Agnes C. Williams (no specific date provided). However, by 1982 ownership had transitioned to Mr. Wallace L. and Darlene B. Williams. Additional notes indicate that the lot was subdivided into two parcels (04-1329-075 and 04-1329-076). Details and photos documenting the physical characteristics of the dwelling and outbuildings are unknown (see figs. 26-27) (Sanborn; Utah State).

In October 1981, the City identified and selected 579 4th Avenue as the location for the development of a mini-park. Construction documents were developed in 1982. In 1984, lighting details were added to the plans, and in July 1987 an interpretive plaque was added prior to completion and dedication of the park. The interpretive plaque highlights Dr. Ellis Reynolds Shipp, one of Utah's first female doctors. The park was named after her to acknowledge her many contributions and leadership to the community. A ribbon-cutting ceremony was held in 1988 (see figs. 28-29) (Avenues; Eason; Salisbury; Swain).

The plaque on-site reads as follows:

“DR. ELLIS REYNOLDS SHIPP PARK. Dr. Ellis Reynolds Shipp 1847 – 1939. When Dr. Ellis Reynolds Shipp graduated from Women’s Medical College in Philadelphia with a specialty in obstetrics and diseases of women and children, she returned to Salt Lake City to practice medicine and open her School of Obstetrics and Nursing in 1878. Dr. Shipp trained thousands of midwives and nurses and delivered over 5,000 babies not only in Salt Lake, but in many other parts of Utah as well. She was a member of the first Board of Directors of Deseret Hospital which was founded in 1882. For most of her life she lived and practiced medicine on Second Avenue¹, just a few blocks from this park. Park name submitted by Meg Brady, 1987.” (Dr. Ellis plaque)

Figures 30-35 illustrate the original park layout. Most recent changes to Shipp Park occurred in 2009 playground improvements were completed to meet Americans with Disability (ADA) requirements (see fig. 36) (Salt Lake City Corporation).

See figure 37 for the 2015 existing conditions map for Shipp Park.

Sources: 2012 HRO 6 Inch Orthophotography. Utah Automated Geographic Reference Center. Web. September 30, 2015. <<http://gis.utah.gov/data/aerial-photography/2012-hro-6-inch-color-orthophotography/>>

“Avenue’s Mini Park.” Salt Lake City, Utah: Park Department, 6 Apr. 1982. Print.

“Color Key to Sanborn Maps.” *Fire Insurance Maps*. UC Berkeley Earth Sciences and Map Division. Web. March 11, 2016. <<http://vm136.lib.berkeley.edu/EART/images/sandkey.jpg>>

Dr. Ellis Reynolds Shipp Park, 1987. Shipp Park, Salt Lake City, Utah. July 30, 2015. Plaque.

Eason, Barbara Bennett. Letter to John Swain. 23 Jan. 1988. TS. Parks Department, Salt Lake City, Utah.

Gust, John. Letter to Dean Coleman. 18 June 1984. TS. Parks Department, Salt Lake City, Utah.

Haglund, Karl T. and Philip F. Notarianni. *The Avenues of Salt Lake City*. Salt Lake City, Utah: Utah State Historical Society, 1980. Print.

¹ Dr. Ellis Reynolds Shipp lived in a home located at 711 Second Avenue (Haglund 11).

“Historic Preservation - Local Districts.” Salt Lake City, Utah: Salt Lake City Planning Department. Web. August 2, 2015. <<http://www.slcgov.com/historic-preservation/historic-preservation-local-historic-districts>>

“Historic Preservation - National Districts.” Salt Lake City, Utah: Salt Lake City Planning Department. Web. August 2, 2015. <<http://www.slcgov.com/historic-preservation/historic-preservation-national-register-historic-districts>>

Koch, Augustus. “Bird’s Eye View of Salt Lake City Utah Territory 1870.” Chicago, Illinois: Chicago Lithographing Co, 1870. Web. November 2, 2015. <<http://www.loc.gov/item/75696611/>>

“Landscapes within Historic Districts Inventory, 2009.” Salt Lake City, Utah: Salt Lake City Planning Department, 2009. Print.

Salisbury, Ron. Letter to Meg Brady. 10 July 1987. TS. Parks Department, Salt Lake City, Utah.

Salt Lake City Architectural/Historical Survey: Avenues. Salt Lake City, Utah: Salt Lake Planning Commission and the Salt Lake City Historic Landmark Committee. Print.

“Salt Lake City Corporation: Shipp Park ADA Playground Improvements.” Salt Lake City, Utah: Salt Lake City Public Services Department, 2009. Print.

Salt Lake City Parks Department, n.d. Photograph Collection, Shipp Mini Park.

Sanborn Fire Insurance Company. *1911 Map of Salt Lake City: Sheet 44.* Sanborn Fire Insurance Company. Web. September 28, 2015. <<http://content.lib.utah.edu/cdm/singleitem/collection/sanborn-jp2/id/945/rec/323>>

---. *1950 Map of Salt Lake City: Sheet 44.* Sanborn Fire Insurance Company. Web. September 28, 2015. <<http://content.lib.utah.edu/cdm/singleitem/collection/sanborn-jp2/id/1754/rec/654>>

Swain, John. Letter to Wes Dewsnup. 30 Oct. 1981. TS. Parks Department, Salt Lake City, Utah.

Utah State. *Tax Appraisal Packet for 579 4th Avenue.* Salt Lake City, Utah: Salt Lake County Archives. September 24, 2015. Print.

Utah State Historical Society, Classified Photograph Collection, Photos No. 13532.

Historian:

JoEllen Grandy and Siri Vlasic
Landmark Design
850 South 400 West, Studio 104
Salt Lake City, Utah 84101
801-474-3300
Prepared on December 14, 2015

SALT LAKE CITY NATIONAL HISTORIC DISTRICTS



Fig 1. National Register Historic Districts Map. Note the star indicating the location of Shipp Park (Historic Preservation – National).

SALT LAKE CITY LOCAL HISTORIC DISTRICTS

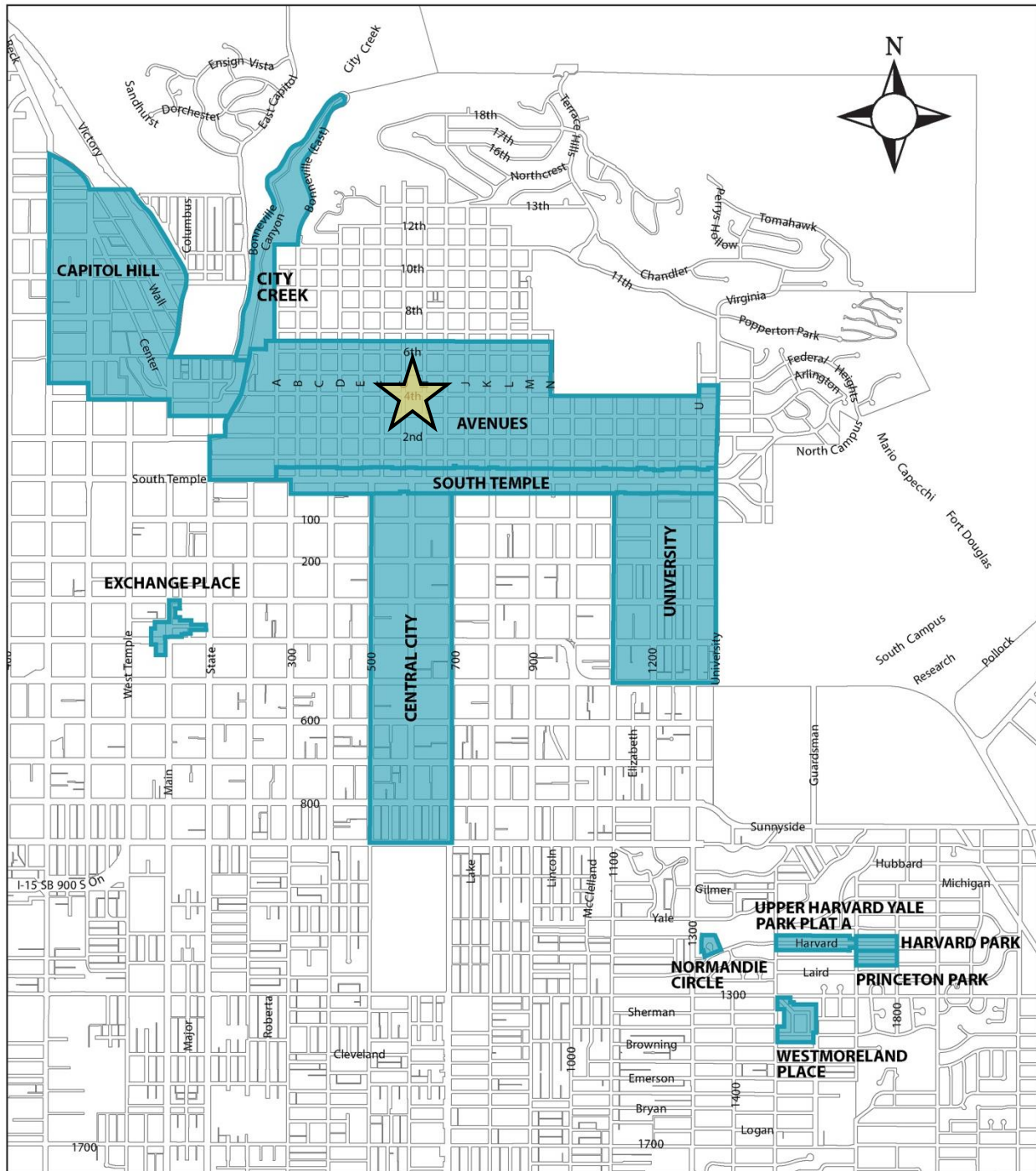


Fig. 2. Local Historic Districts Map. Note the star indicating the location of Shipp Park (Historic Preservation – Local).

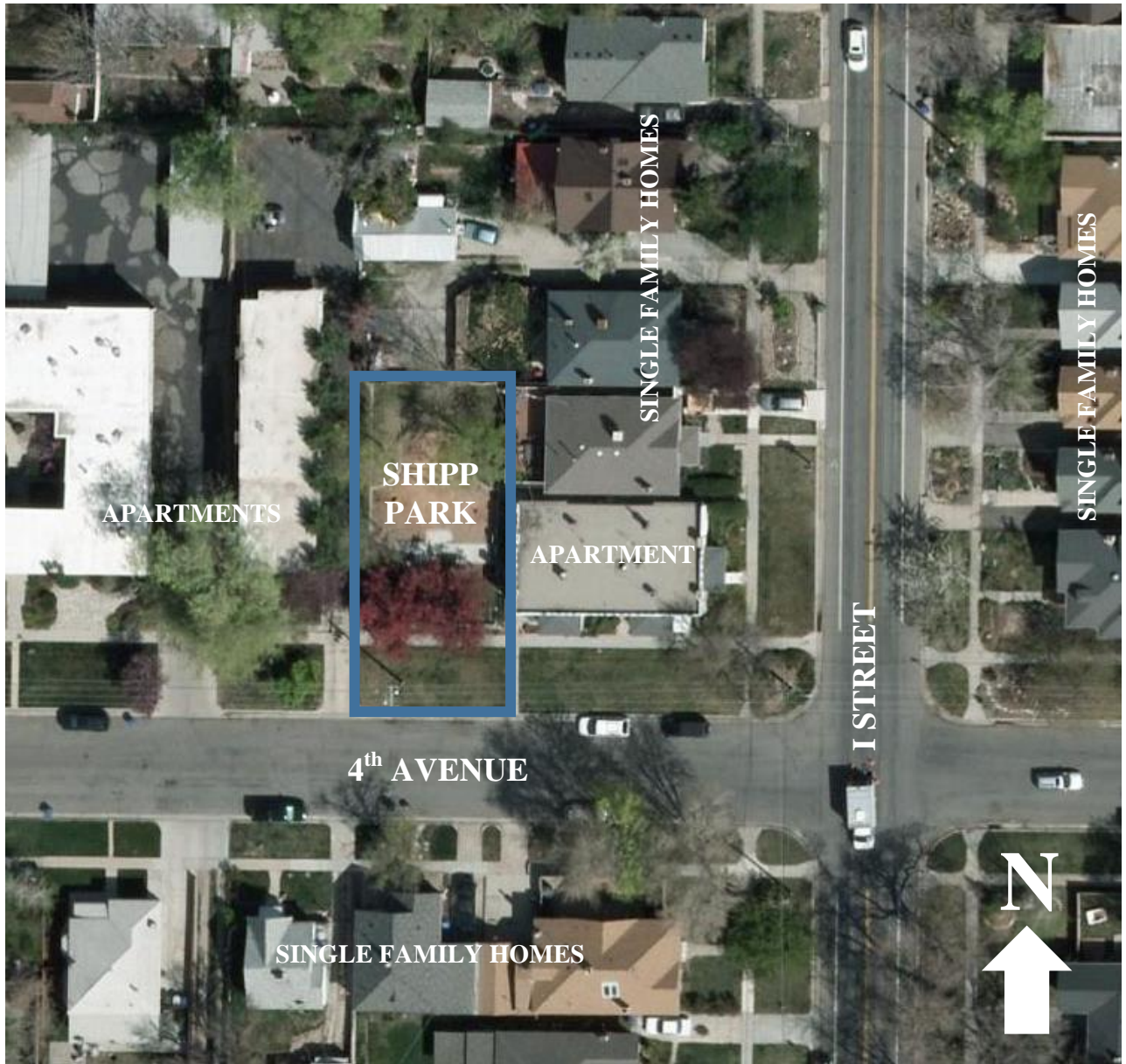


Fig. 3. Context Map (2012).



Fig. 4. Approaching view to the northeast looking into the park on 4th Avenue. Note the historic 1916 apartment complex to the east (Salt, Architectural) (Siri Vlastic, 7/30/15).



Fig. 5. View to the east standing outside the entrance into the park. Note the wide park strip to the right and the clipped shrub border and iron fence to the left (Siri Vlastic, 7/30/15).



Fig. 6. Shipp Park has two character-defining sections (2012).



Fig. 7. View to the north of the main entrance into the park on 4th Avenue. Note the symmetrical design (Siri Vlastic, 7/30/15).



Fig. 8. Victorian-era wrought iron fence creates a formal border along the 4th Avenue entrance frontage (Siri Vlastic, 7/30/15).

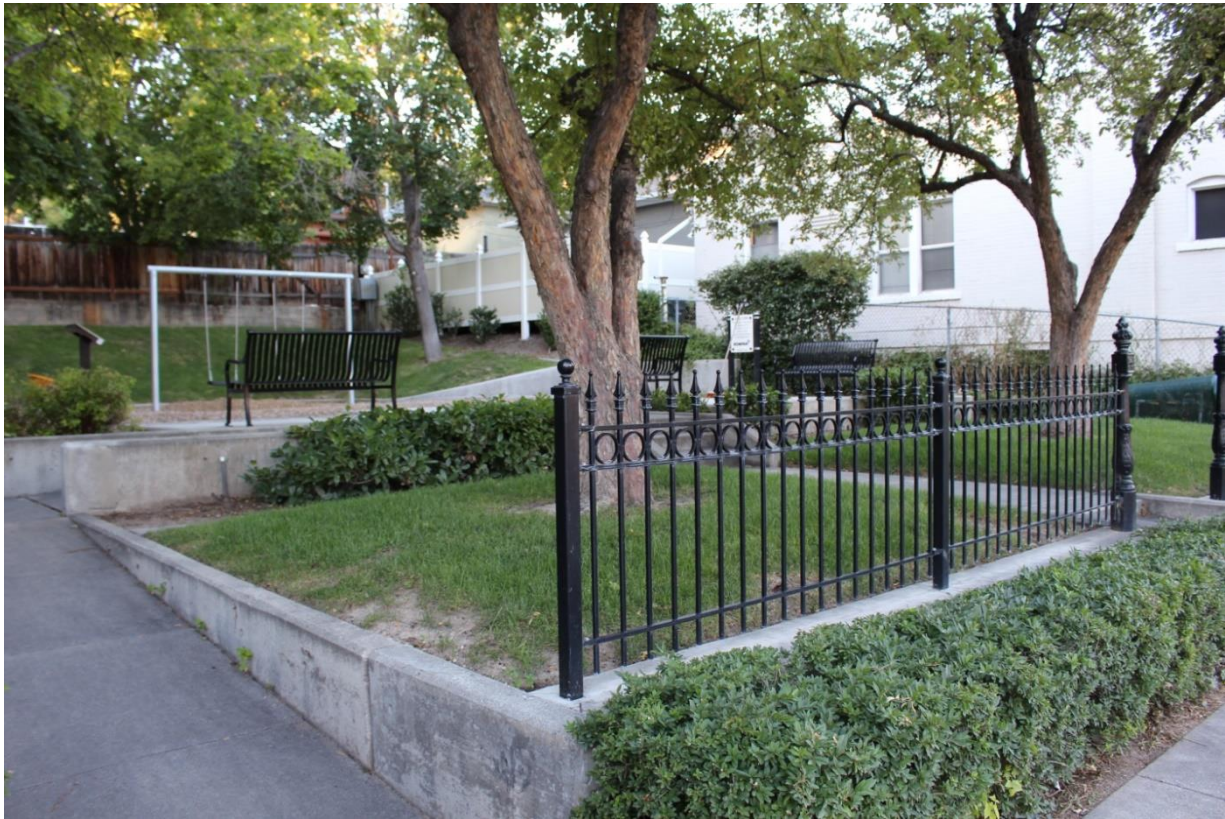


Fig. 9. View to the northeast of ramped access provided on the west side into the park on 4th Avenue (Siri Vlastic, 7/30/15).



Fig. 10. Ramped approach into the park. Note the barberry (*Berberis sp.*) and viburnum (*Viburnum sp.*) shrub border along the chain link fence to the west and playground equipment to the rear (Siri Vlastic, 7/15/15).



Fig. 11. View to the east of the continuation of the ADA ramp. Note the laurel (*Laurus sp.*) shrub border, low retaining wall and mature crabapple (*Malus sp.*) trees to the right (Siri Vlastic, 7/30/15).



Fig. 12. View to the southeast standing inside the entrance to the park (Siri Vlastic, 7/30/15).



Fig. 13. View to the northwest of a plaque located along the western edge of the park. Note the 1960 apartment complex in the background and base of the Cleveland Maple and shrub planting (Salt, Architectural) (Siri Vlastic, 7/30/15).

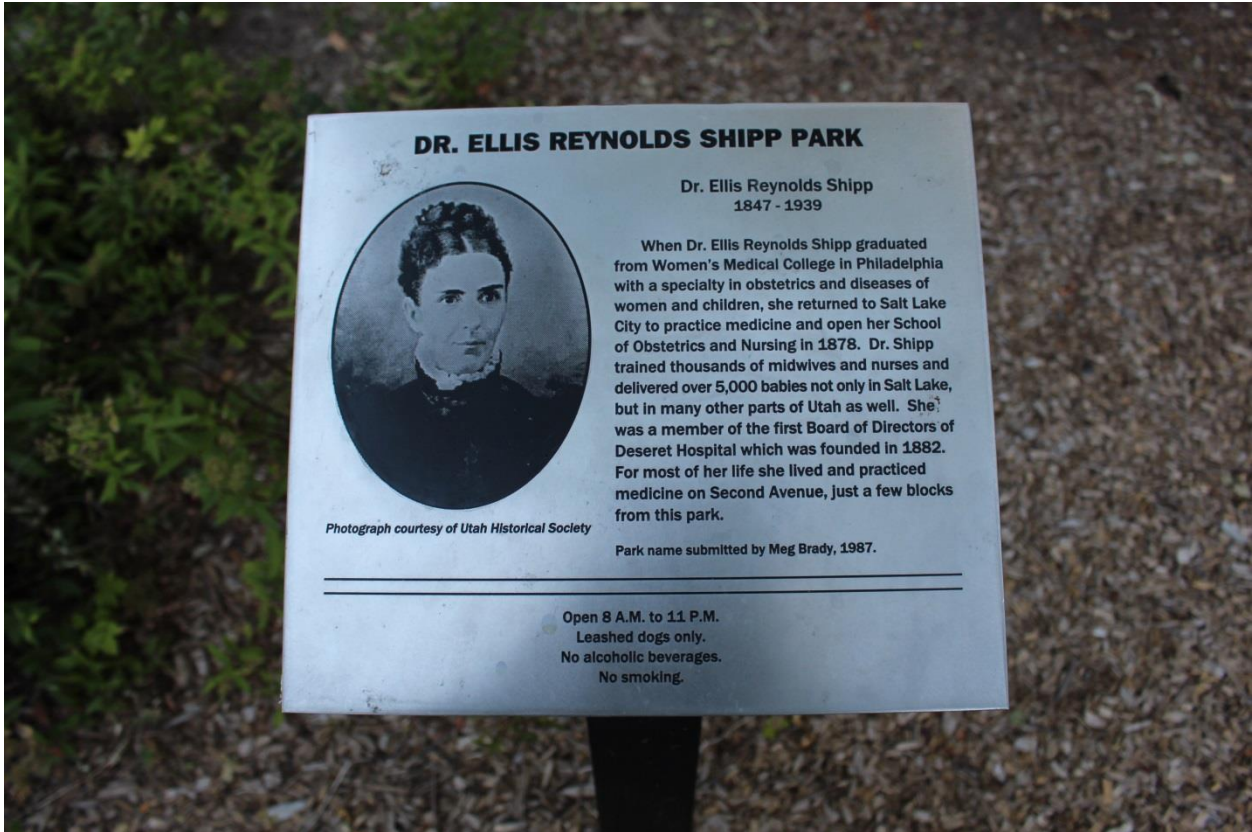


Fig. 14. Plaque tribute to Dr. Ellis Reynolds Shipp (Siri Vlastic, 7/30/15).



Fig. 15. View to the northeast of the playground equipment – one person spinner top and two swings (Siri Vlastic, 7/15/15).



Fig. 16. Additional view to the northeast of the playground equipment – swings and additional one person spinner top (Siri Vlastic, 7/30/15).



Fig. 17. Two decorative black metal benches mark the south entrance of the playground (Siri Vlastic, 7/30/15).



Fig. 18. Profile of the decorative benches (Siri Vlastic, 7/30/15).



Fig. 19. View to the north of the west side of the park. Note the retaining wall and fences along the perimeter and the moderately-steep grassed slope to the north end of the park (Siri Vlastic, 7/30/15).



Fig. 20. View to the northeast of the park illustrating a continuation of the retaining wall/fence along the perimeter and grassed slope (Siri Vlastic, 7/30/15).



Fig. 21. View to the west standing near the northeast corner of the park. Note the chain-link and wooden fences, retaining wall and slope (Siri Vlastic, 7/30/15).



Fig. 22. View to the southwest standing near the northeast corner of the park facing southwest. Note the significant grade change from below (Siri Vlastic, 7/30/15).



Fig. 23. View to the south of a Kompan sign and an additional decorative metal bench located along the eastern edge of the park. Photograph taken to the south (Siri Vlastic, 7/30/15).

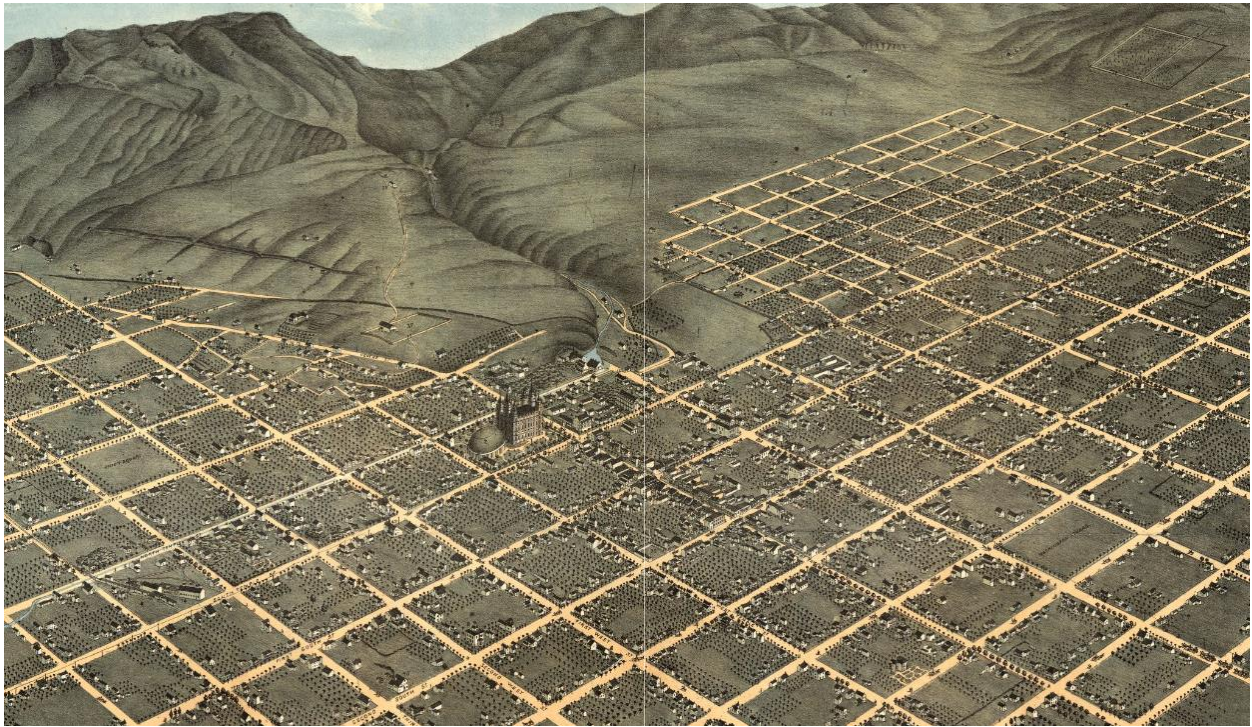


Fig. 24. An 1870 northeastern bird's eye view of Salt Lake City. Note the ten-acre block grid pattern patterned after the "Plat of the City of Zion". Map courtesy of Library of Congress, Geography and Map Division (Koch).

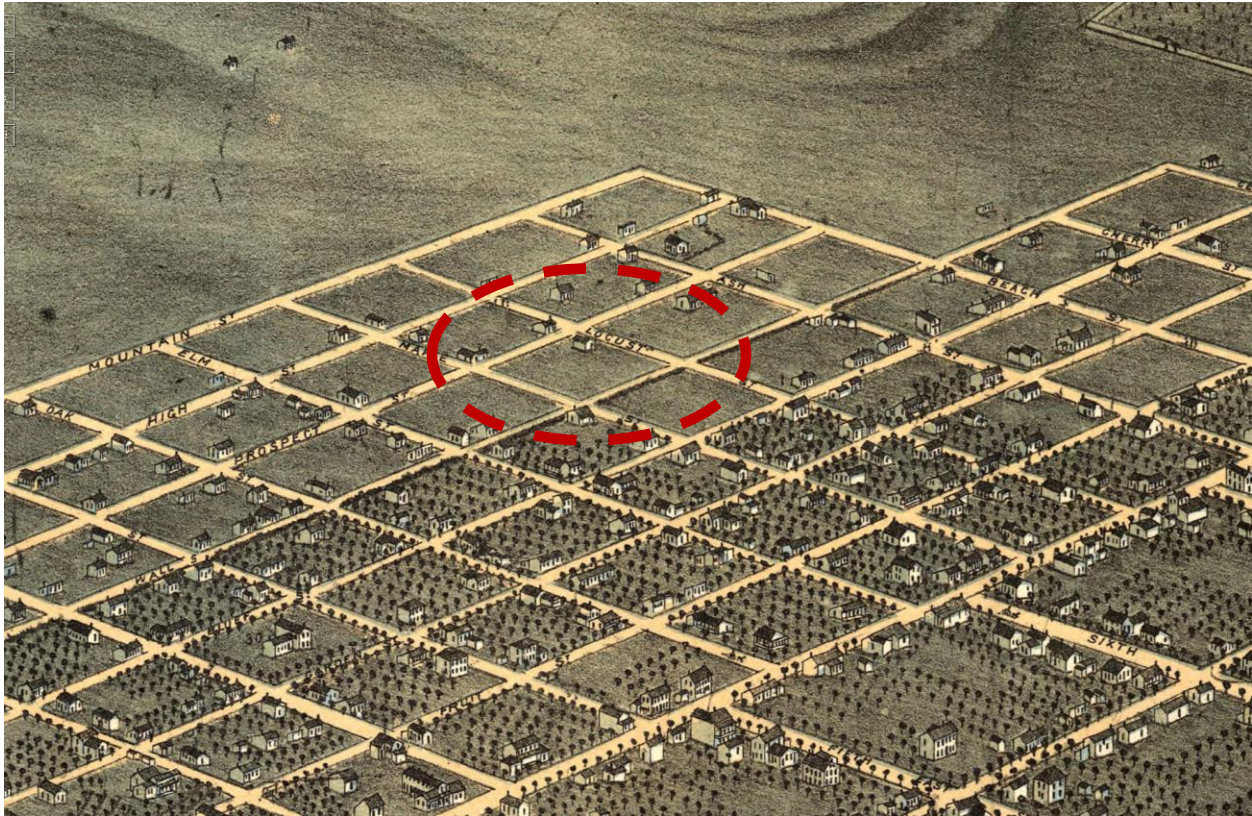


Fig. 25. An 1870 northeastern close-up bird's eye view of the City block where Shipp Park would eventually be located. Map courtesy of Library of Congress, Geography and Map Division (Koch).

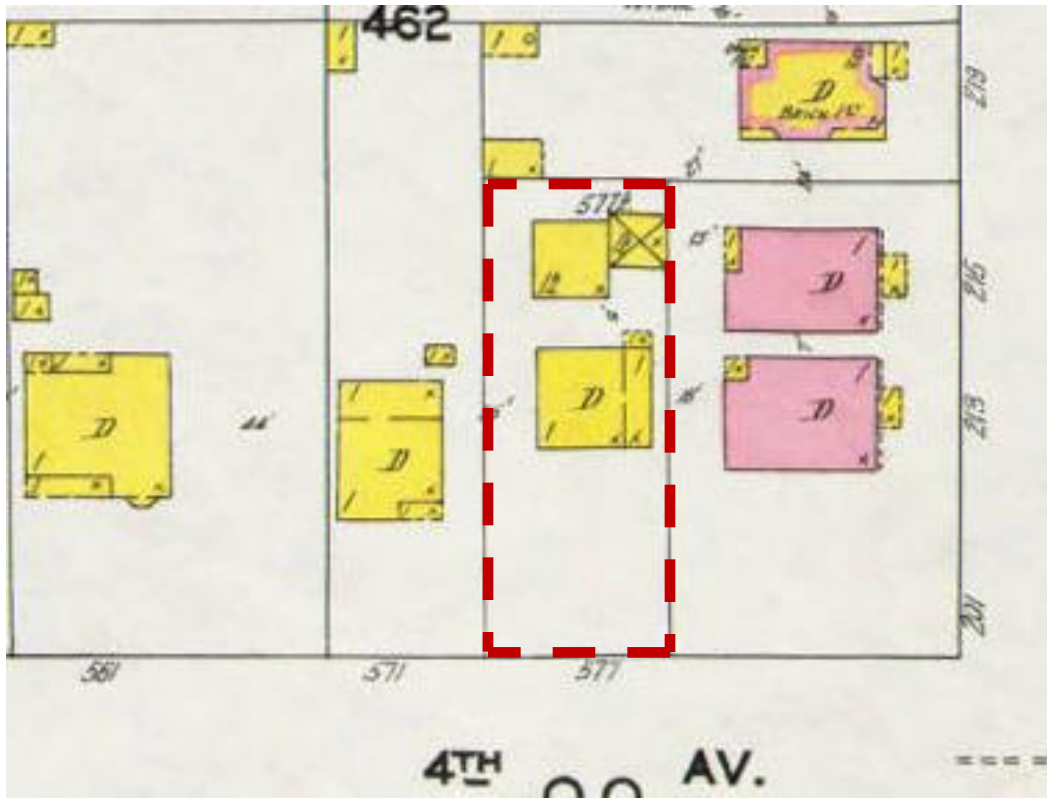


Fig. 26. 1911 Sanborn map illustrates the location of a framed home and detached outbuildings (Sanborn 1911).

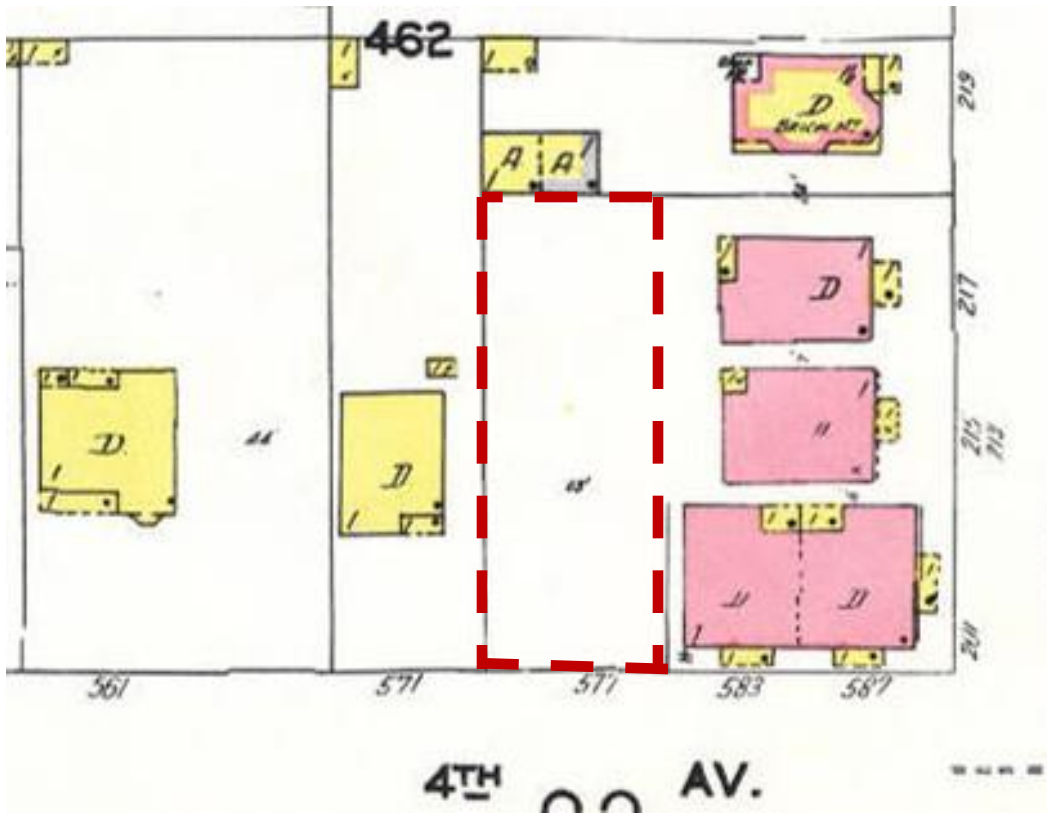
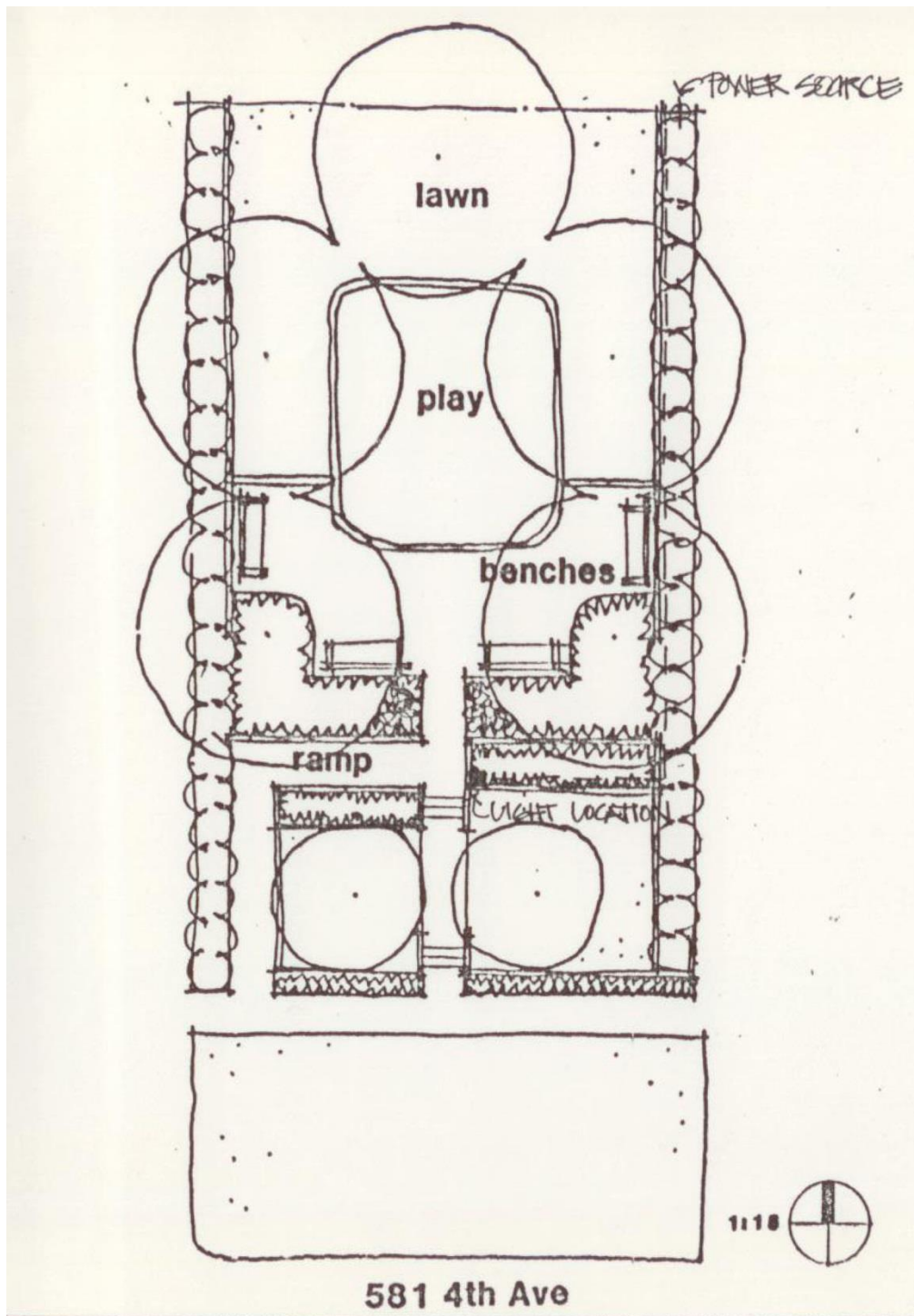


Fig. 27. 1950 Sanborn map illustrates the absence of the framed home and detached outbuildings. Note the apartment complex to the east and the undefined property line (Sanborn 1950).

Fig. 28. See attached map of 1982 original plans for Shipp Park (Avenues).



Avenues Mini Parks

Fig. 29. A single light was added to the plans for Shipp Park in 1984 (Gust).



Fig. 30. Undated northwest view of the park on 4th Avenue prior to 2009 ADA improvements. Note the iron fence located after the second stair landing instead of after the first (Salt, Parks).



Fig. 31. Main entrance into the park on 4th Avenue in 2009. Note the location of the plaque and original playground equipment (Landscapes 6).



Fig. 32. Original location of the plaque (Salt, Parks).



Fig. 33. Playground equipment in 2009 – two swings and a slide (Landscapes 6).



Fig. 34. Victorian-era wrought iron fence detail in 2009 before it was coated black (Landscapes 6).



Fig. 35. Southwest view of the decorative iron fence in 2009 marked the southern edge of the playground (Landscapes 6).

Fig. 36. See attached map of 2009 ADA playground improvement plans for Shipp Park (Salt, Corporation).

Fig. 37. See attached map of 2015 existing conditions of Shipp Park.

KEY

TILE 131
BRICK 131
PROBABLY 131

ADDBE

HEIGHT OF BUILDING IN FEET FROM GROUND TO ROOF LINE

(C. BR.)

(C. B.)

(CONC.)

(TILE)

NUMBER OF STORIES

TWO STORIES AND OVER WITH COMPOSITION ROOF

SINGLE ROOF

(VEND)

BRICK 1ST

FRAME, BRICK LINED

F=FLAT, S=STORE

D=DWELLING

A in B AUTO IN BENT

LOFT

(ASB. CL.)

NON-COMBUSTIBLE ROOF COVERING OF METAL, SLATE, TILE OR ASBESTOS SHINGLES

SKYLIGHT LIGHTING TOP STORY ONLY

SKYLIGHT LIGHTING THREE STORIES

WIRED GLASS SKYLIGHT

FIRE WALL 6 INCHES ABOVE ROOF

Figures 8, 12, 16 indicate thickness of wall in inches.

Wall without opening and size in inches.

Wall with openings on floors as designated.

Opening with single iron or tin clad door.

" " double iron " " doors.

" " standard fire doors.

Openings with wired glass doors.

Drive or passage way.

Stable.

Auto. House or private garage.

(C. B.)

(C. B. & BR.)

(C. B. & BR. CONSTN)

(C. B. & BR. CONSTN) (BR FACED)

(C. B. & BR. CONSTN)

Fire proof construction. (OR FIRE RESISTIVE CONSTN)

Adobe building.

Stone building.

Concrete, lime, cinder or cement brick.

Hollow concrete or cement block constn.

Concrete or reinforced concrete constn.

Tile building.

Brick building with frame cornice.

" " " stone front.

" " " frame side.

(DIVIDED BY FRAME PARTITION)

Brick veneered building.

" " and frame building.

Frame building, brick lined.

" " metal clad.

Frame building.

Iron building.

Tenants building occupied by various manufacturing or occupancies.

Frame building covered with asbestos.

Brick building with brick or metal cornice.

Fire wall 6 inches above roof.

" " " 12 " " "

" " " 18 " " "

" " " 36 " " "

Figures 8, 12, 16 indicate thickness of wall in inches.

Wall without opening and size in inches.

Wall with openings on floors as designated.

Opening with single iron or tin clad door.

" " double iron " " doors.

" " standard fire doors.

Openings with wired glass doors.

Drive or passage way.

Stable.

Auto. House or private garage.

Solid brick with interior walls of C. B. or C. B. and brick mixed.

Mixed construction of C. B. and brick with one wall of solid brick.

Mixed construction of C. B. and brick with one wall faced with 4" brick.

Mixed construction of C. B. and brick throughout.

MANSARD ROOF
DOTS REPRESENT OPENINGS.
STEMS INDICATE STORIES,
COUNTING FROM LEFT
TO RIGHT, LOOKING
TOWARD BUILDING.

Window opening in first story.

Window openings in second and third stories.

Window openings in second and fourth stories.

Windows with wired glass.

Windows with iron or tin clad shutters.

Window openings tenth to twenty-second stories.

Open elevator.

Frame enclosed elevator.

" " " with traps.

" " " self closing traps.

Concrete block enclosed elevator with traps.

Tile enclosed elevator with self closing traps.

Brick enclosed elev. with wired glass door.

Block number.

Vertical pipe or stand pipe.

Automatic fire alarm.

Independent electric plant.

Automatic sprinklers.

Automatic chemical sprinklers.

Automatic sprinklers in part of building only. (NOTE UNDER SYMBOL INDICATES PROTECTED PORTION OF BUILDING)

Not sprinklered.

Outside vertical pipe on fire escape.

Fire alarm box.

Single hydrant.

Double " "

Triple " "

Quadruple hydrant of the "High Pressure Fire Service".

Fire alarm box of the "High Pressure Fire Service".

Water pipes of the "High Pressure Fire Service" and hydrants of the "High Pressure Fire Service" as shown on key map.

Water pipes and size in inches.

Water pipes of private supply.

House numbers shown nearest to buildings are official or actually up on buildings.

Old house numbers shown furthest from buildings.

Reference to adjoining page.

Fire engine house, as shown on key map.

Fire pump.

Under page number refers to corresponding page of previous edition.

CODING OF STRUCTURAL UNITS FOR FIREPROOF AND NON-COMBUSTIBLE BUILDINGS

FRAMING CODE STRUCTURAL UNIT	FLOORS CODE STRUCTURAL UNIT	ROOF CODE STRUCTURAL UNIT
A. Reinforced Concrete Frame.	1. Reinforced Concrete, Reinforced Concrete with Masonry Units, Pre-cast Concrete or Gypsum Slabs or Planks.	a. Reinforced Concrete, Reinforced Concrete with Masonry Units, Reinforced Gypsum Concrete, Pre-cast Concrete or Gypsum Slabs or Planks.
B. Reinforced Concrete Joists, Columns, Beams, Trusses, Arches, Masonry Piers.	2. Concrete on Metal Lath, Incombustible Form Boards, Paper-backed Wire Fabric, Steel Deck, and Cellular, Ribbed or Corrugated Steel Units.	b. Concrete or Gypsum on Metal Lath, Incombustible Form Boards, Paper-backed Wire Fabric, Steel Deck, and Cellular, Ribbed or Corrugated Steel Units.
C. Protected Steel Frame.	3. Open Steel Deck or Grating.	c. Incombustible Composition Boards with or without Insulation, Masonry or Metal Tiles.
D. Individually Protected Steel Joists, Columns, Beams, Trusses, Arches.		d. Steel Deck, Corrugated Metal or Asbestos Protected Metal with or without Insulation.
E. Indirectly Protected Steel Frame.		
F. Indirectly Protected Steel Joists, Columns, Beams, Trusses, Arches.		
G. Unprotected Steel Frame.		
H. Unprotected Steel Joists, Columns, Beams, Trusses, Arches.		
O. Masonry Bearing Walls.		

LAND USE CODE APPLICABLE TO CHANGES DIAGRAMMED AFTER 1948

R	RESIDENTIAL	M	MANUFACTURING
RT	RESIDENTIAL - TRANSIENT	P	PUBLIC OR INSTITUTIONAL
C	COMMERCIAL	U	UTILITY
W	WAREHOUSE	T	TRANSPORTATION

NUMERICAL PREFIX INDICATES THE NUMBER OF ESTABLISHMENTS IN EACH CATEGORY

The coding for framing, floor and roof structural units as shown above is used in describing the construction of fire-resistive buildings. In addition, reports for fire-resistive buildings will show the date built and wall construction when other than brick.

F P buildings have masonry floors and roof; concrete and/or directly or indirectly protected steel framing; and clay brick, stone or poured concrete walls.

F P X buildings are F P buildings with inferior walls such as concrete block, cement brick, metal or glass panels, etc.

N C buildings have unprotected steel framing and fire-resistive but non-masonry floors and roof.

FP-1962
(CONC.)
A-1-B

A fire-resistive building built in 1962 with concrete walls and reinforced concrete frame, floors and roof.

FPX-1962
(METAL PANELS)
H-2-D
NON-COMBUSTIBLE

A fire-resistive building built in 1962 with metal panel walls, indirectly protected steel frame, concrete floors and roof on metal lath, noncombustible ceilings.

NC-1962
(C. B.)
H-2-D

A noncombustible building built in 1962 with concrete block walls; unprotected steel columns and beams; concrete floors on metal lath and steel deck roof.

Color key to Sanborn maps (Color)

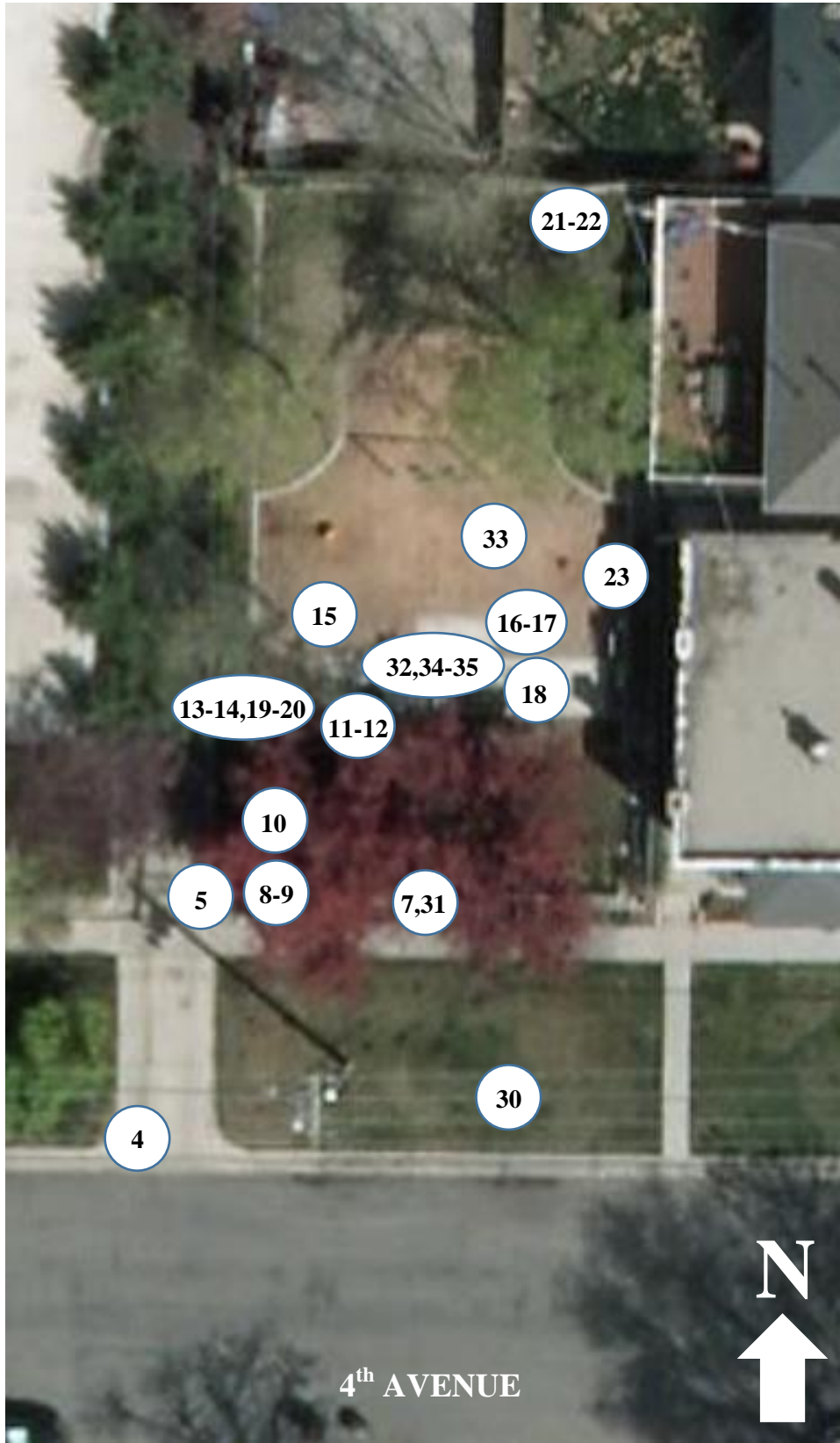
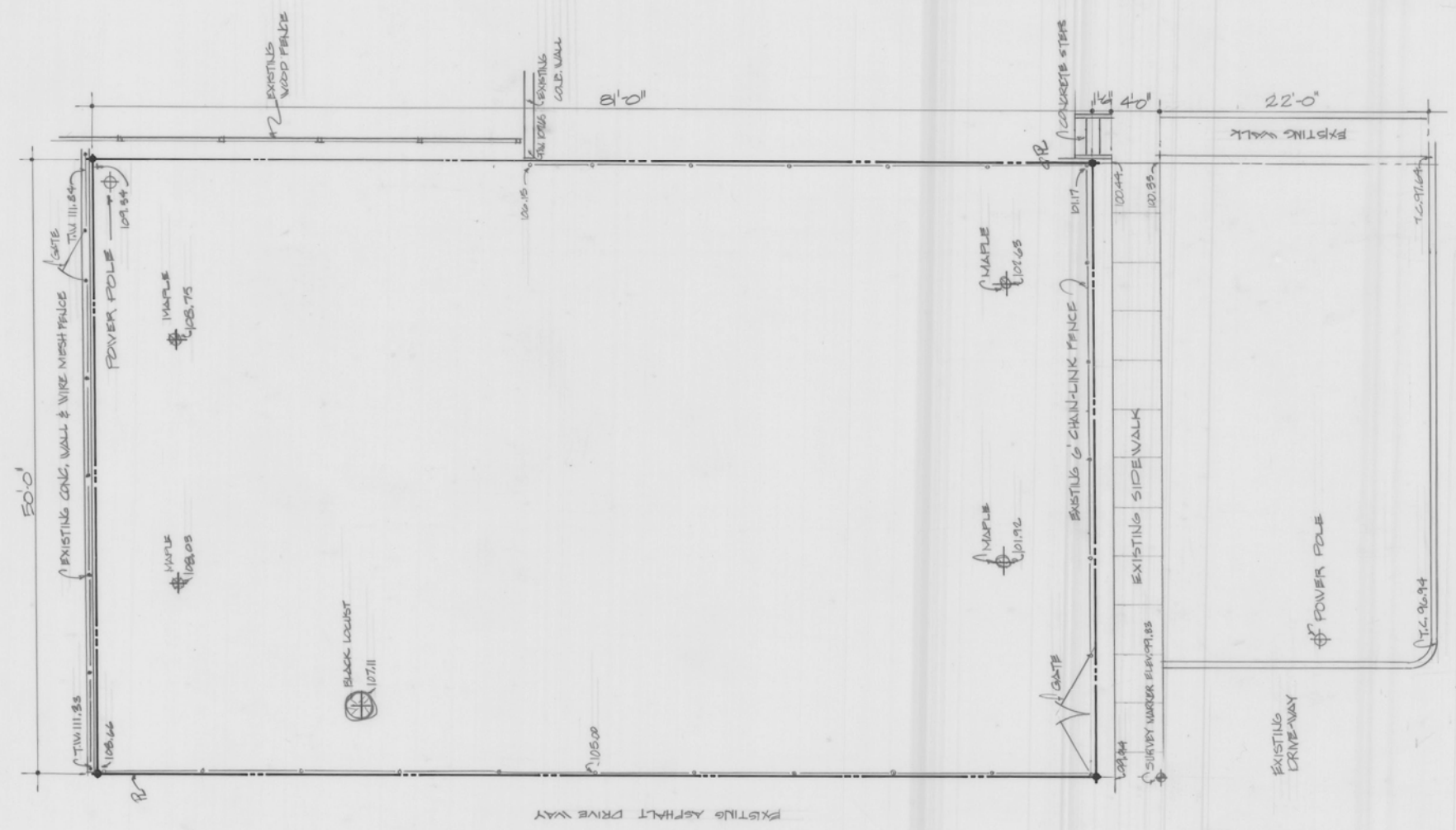
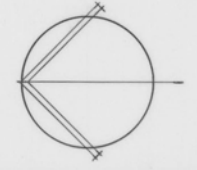
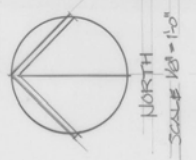


Photo Key (2012)



581 EAST 4TH AVENUE



SHEET NO.

PROJECT NO.

REVISIONS _____

19-Y-65

DATE

4/6/88

DESIGN _____

SCALE

1/8"=1'-0"

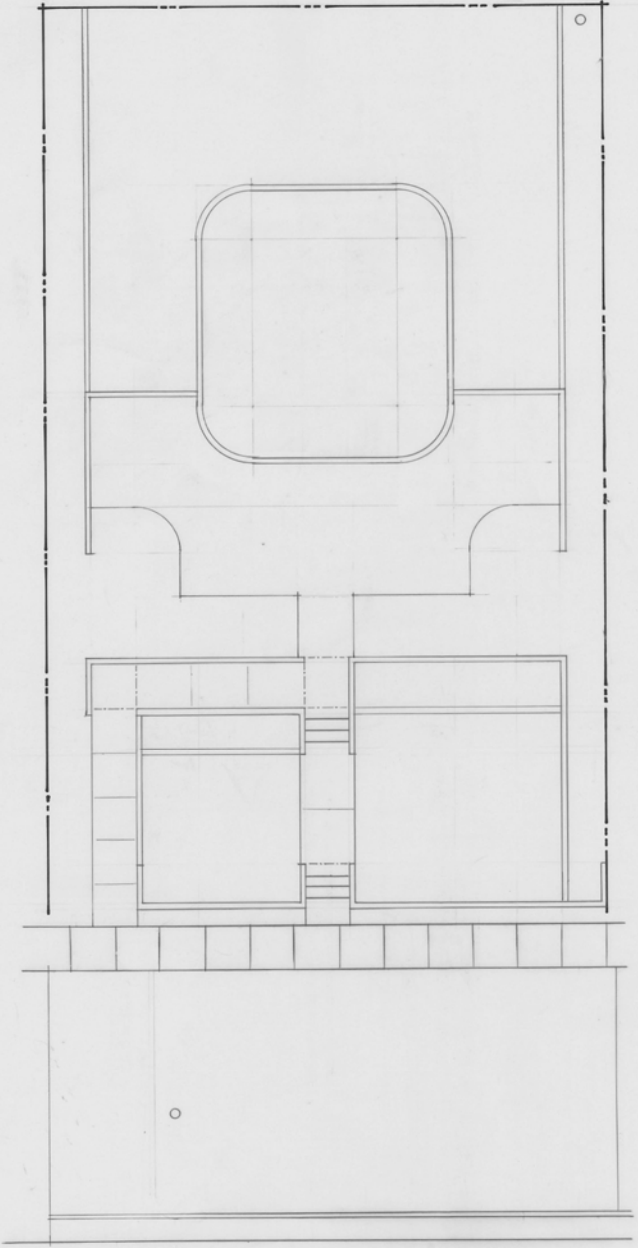
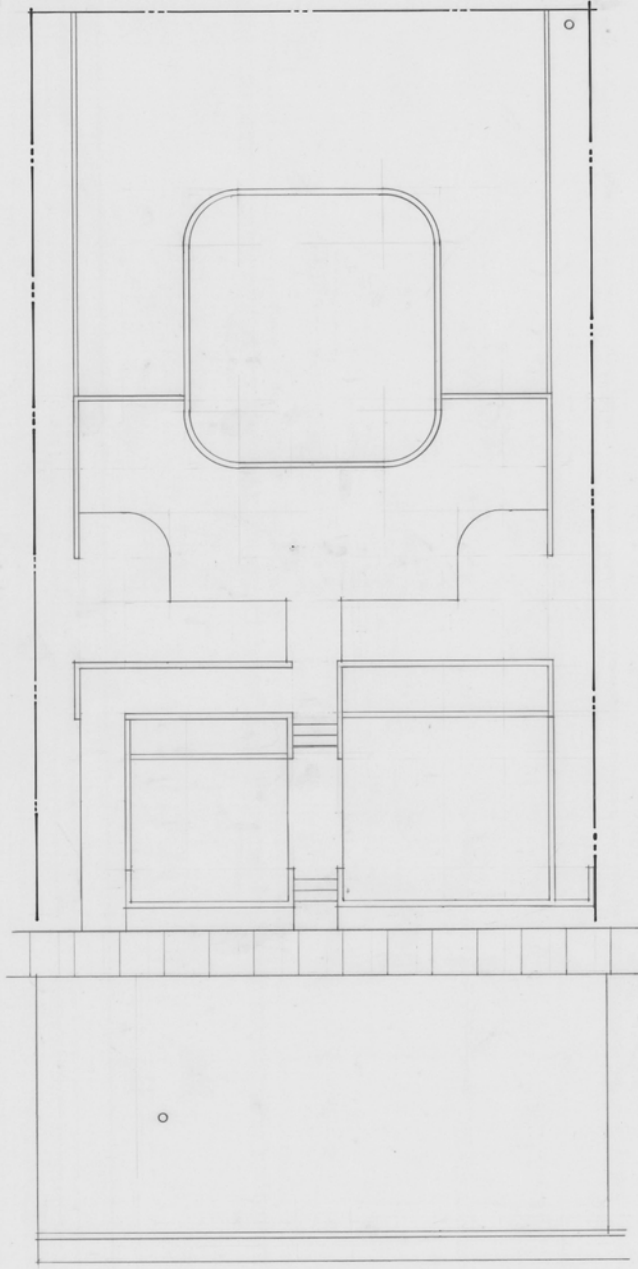
DRAWN _____

OF _____ SHEETS

CHECKED _____

AVENUE'S MINI PARK





SHEET NO.

OF SHEETS

PROJECT:

ACCT:

DATE:

SCALE:

AVENUE'S MINI PARK
581 EAST 4TH AVENUE
SALT LAKE CITY, UTAH

REVISIONS

DESIGN

DRAWN

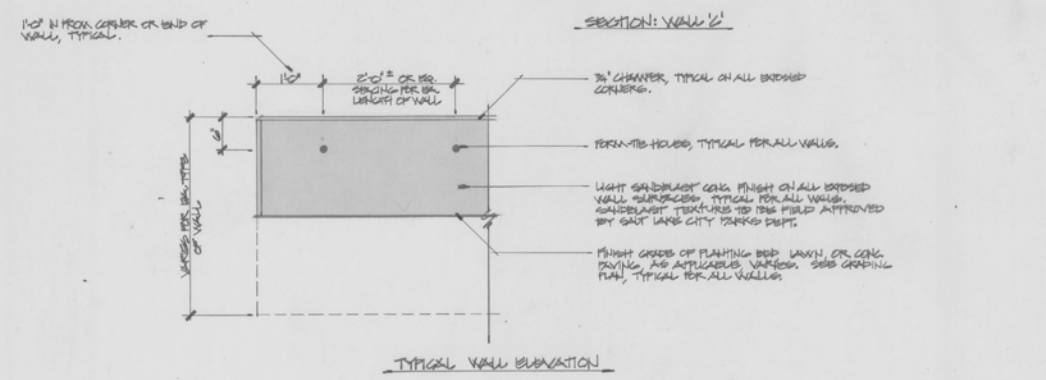
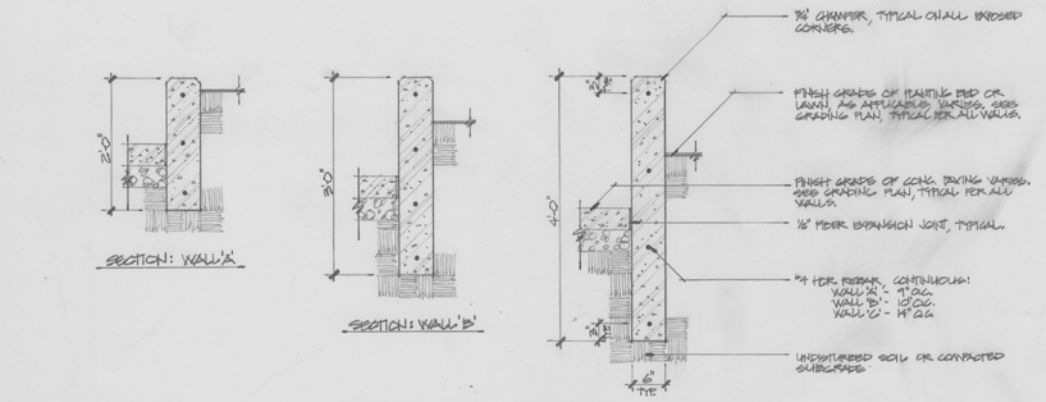
CHECKED



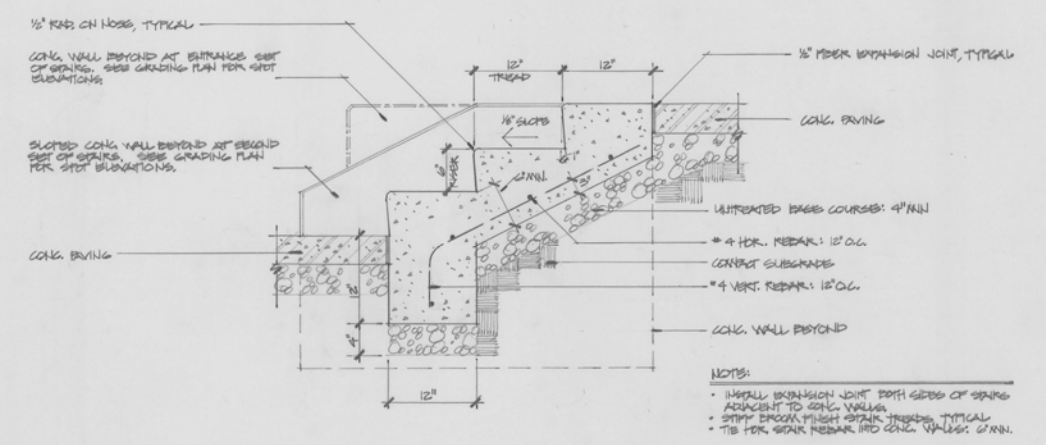
Your Salt Lake City
 Parks & Recreation

REVISIONS	DESIGN	DRAWN	CHECKED

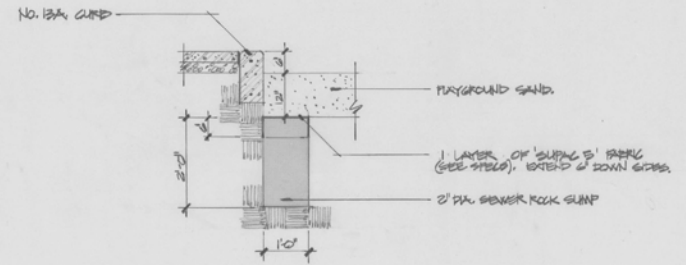
AVENUE'S MINI PARK
581 EAST 4TH AVENUE
SALT LAKE CITY, UTAH



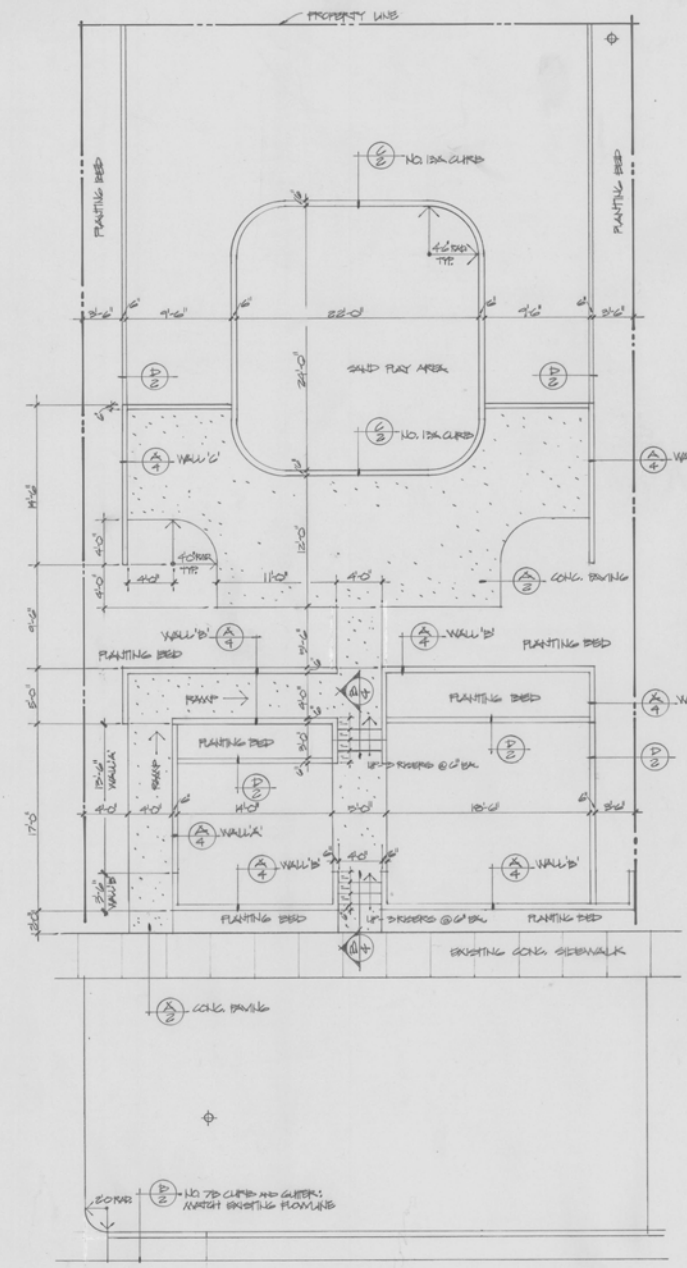
TYPICAL WALL DETAILS
SCALE: 3/4"=1'-0"



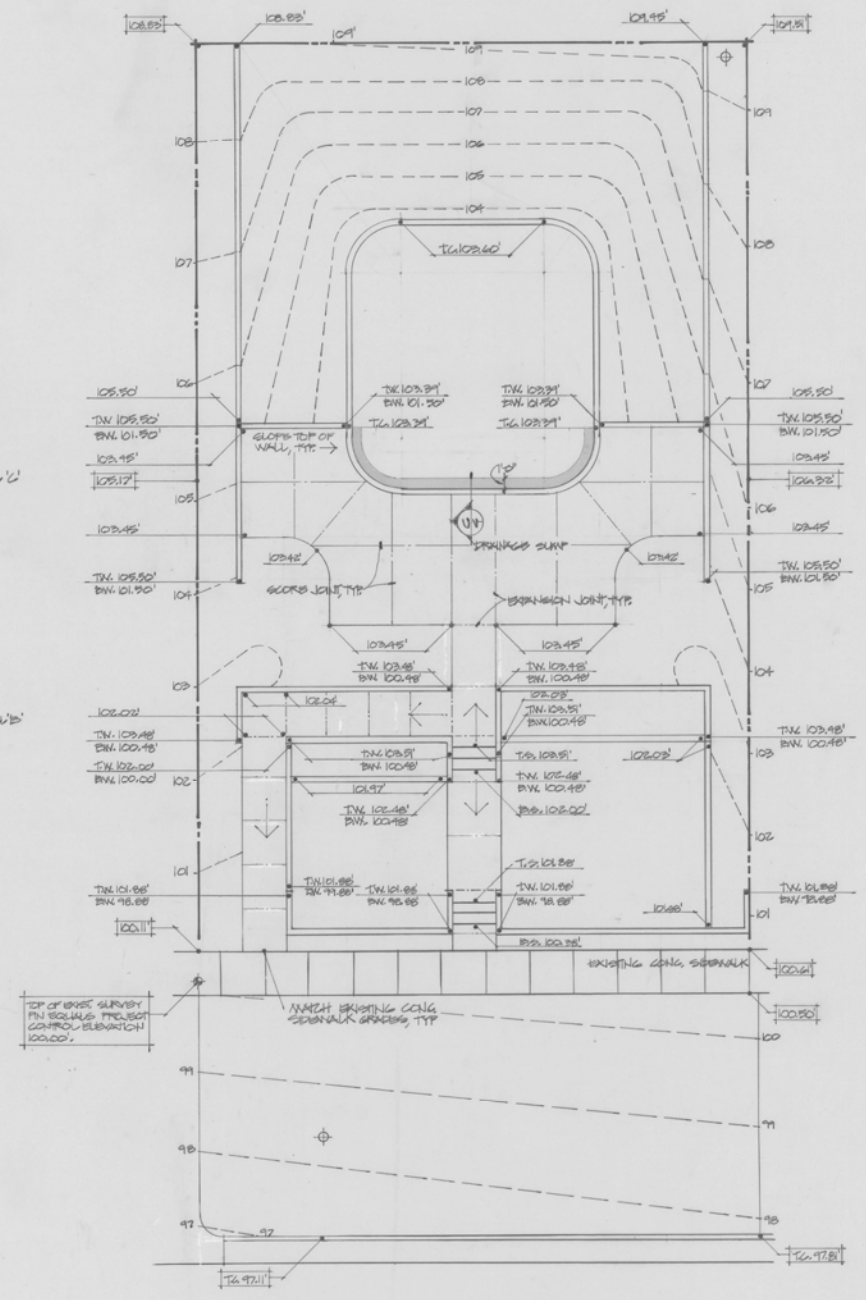
SECTION: CONCRETE STAIRS
SCALE: 1/2"=1'-0"



SECTION: DRAINAGE SUMP
SCALE: 1/2"=1'-0"



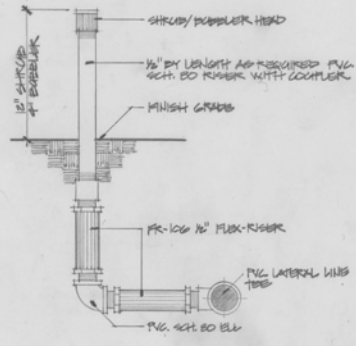
Layout Plan
SCALE: 1/8"=1'-0"



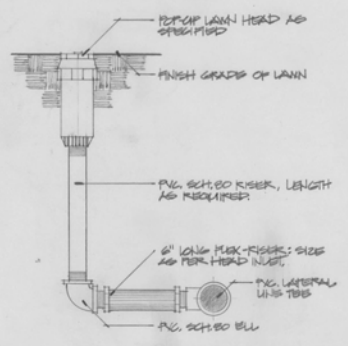
General Grading Notes

1 SEE SHEET NO. 2

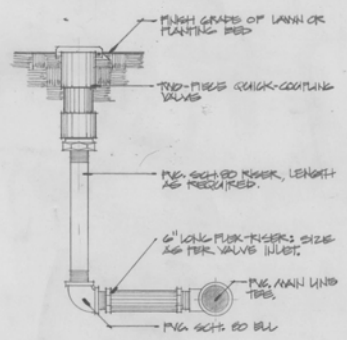
Grading Plan
SCALE: 1/8"=1'-0"



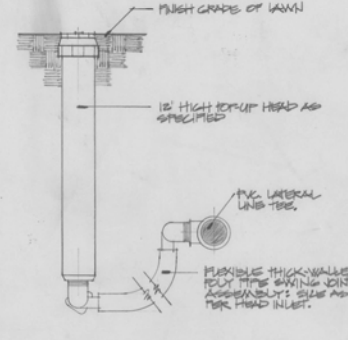
(A) STRUCK/BUBBLER HEAD
NO SCALE



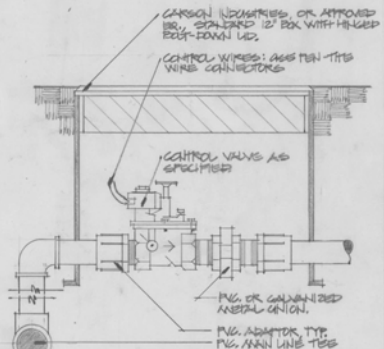
(B) POP-UP LAWN HEAD
NO SCALE



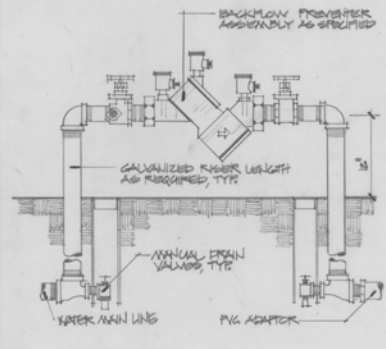
(C) QUICK-COUPLER DETAIL
NO SCALE



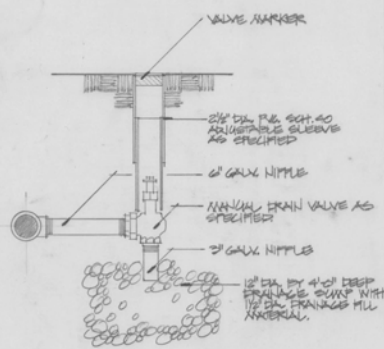
(D) 12' HIGH POP-UP DETAIL
NO SCALE



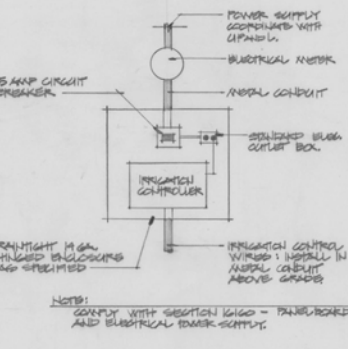
(E) CONTROL VALVE DETAIL
NO SCALE



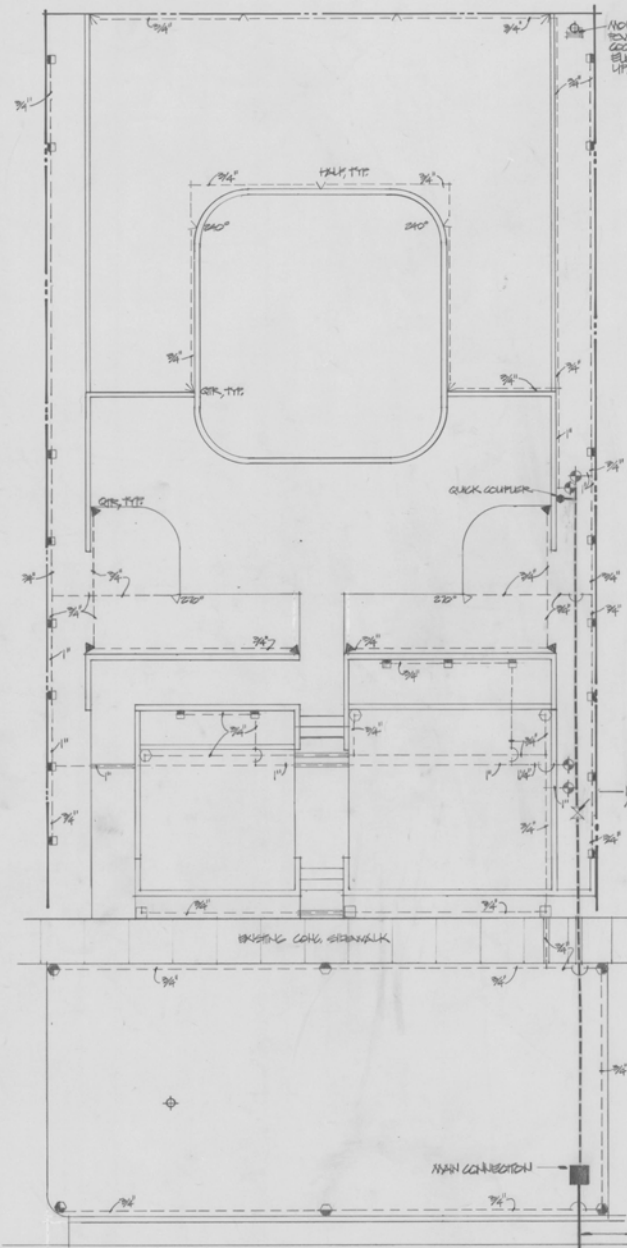
(F) BACKFLOW PREVENTER DETAIL
NO SCALE



(G) MANUAL DRAIN VALVE DETAIL
NO SCALE



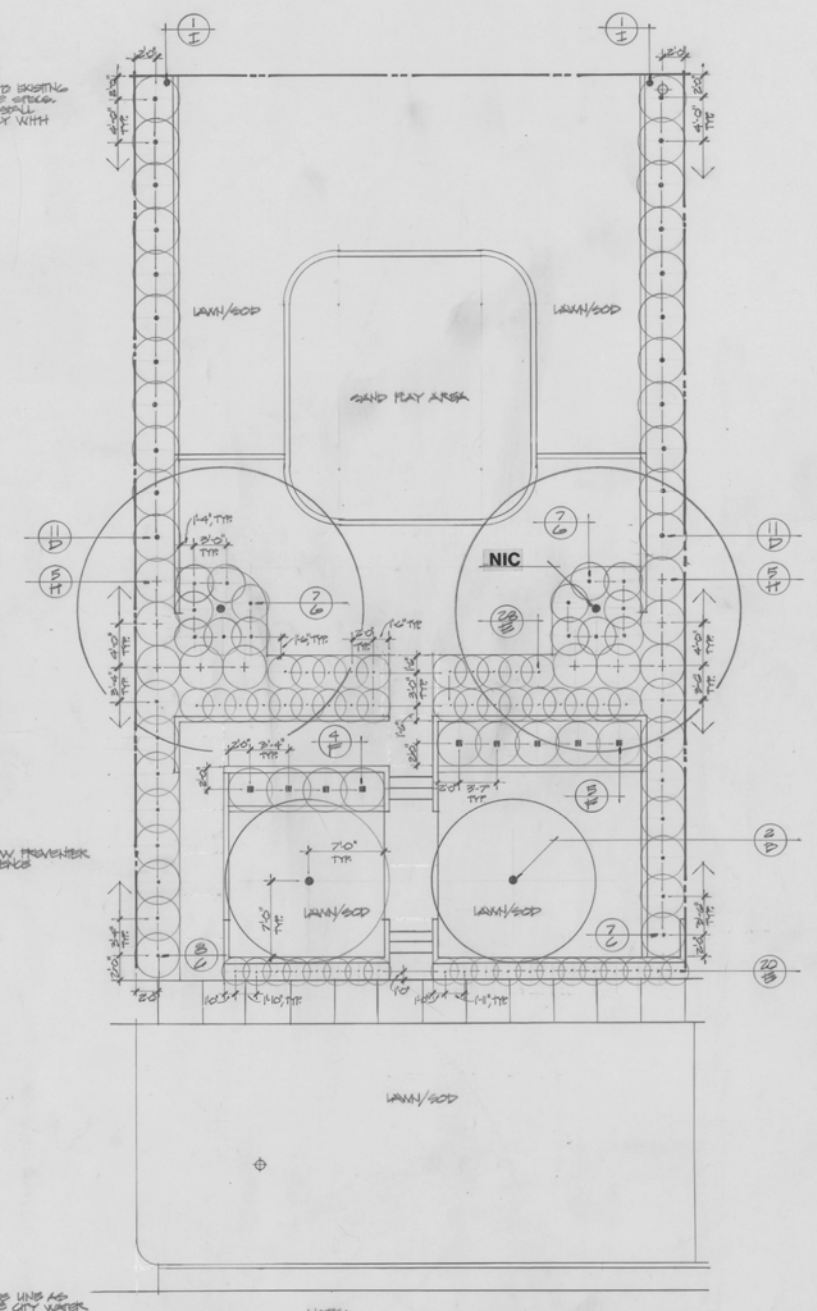
(H) ELECTRICAL PANEL SCHEMATIC
NO SCALE



- NOTES
1. DEPTH OF LATERAL LINES: 12" MIN.
2. DEPTH OF MAIN LINES: 18" MIN.

KEY	DESCRIPTION
TOPO	304-12-01 12" POPUP
TOCB	304-12-01 12" POPUP
TOPO	304-00-01 3" POPUP
TOPO	304-00-02 3" POPUP
TOPO	304-00-03 3" POPUP
TOPO	304-00-04 3" POPUP
TOPO	304-00-05 3" POPUP
TOPO	304-00-06 3" POPUP
TOPO	304-00-07 3" POPUP
TOPO	304-00-08 3" POPUP
TOPO	304-00-09 3" POPUP
TOPO	304-00-10 3" POPUP
TOPO	304-00-11 3" POPUP
TOPO	304-00-12 3" POPUP
TOPO	304-00-13 3" POPUP
TOPO	304-00-14 3" POPUP
TOPO	304-00-15 3" POPUP
TOPO	304-00-16 3" POPUP
TOPO	304-00-17 3" POPUP
TOPO	304-00-18 3" POPUP
TOPO	304-00-19 3" POPUP
TOPO	304-00-20 3" POPUP
TOPO	304-00-21 3" POPUP
TOPO	304-00-22 3" POPUP
TOPO	304-00-23 3" POPUP
TOPO	304-00-24 3" POPUP
TOPO	304-00-25 3" POPUP
TOPO	304-00-26 3" POPUP
TOPO	304-00-27 3" POPUP
TOPO	304-00-28 3" POPUP
TOPO	304-00-29 3" POPUP
TOPO	304-00-30 3" POPUP
TOPO	304-00-31 3" POPUP
TOPO	304-00-32 3" POPUP
TOPO	304-00-33 3" POPUP
TOPO	304-00-34 3" POPUP
TOPO	304-00-35 3" POPUP
TOPO	304-00-36 3" POPUP
TOPO	304-00-37 3" POPUP
TOPO	304-00-38 3" POPUP
TOPO	304-00-39 3" POPUP
TOPO	304-00-40 3" POPUP
TOPO	304-00-41 3" POPUP
TOPO	304-00-42 3" POPUP
TOPO	304-00-43 3" POPUP
TOPO	304-00-44 3" POPUP
TOPO	304-00-45 3" POPUP
TOPO	304-00-46 3" POPUP
TOPO	304-00-47 3" POPUP
TOPO	304-00-48 3" POPUP
TOPO	304-00-49 3" POPUP
TOPO	304-00-50 3" POPUP
TOPO	304-00-51 3" POPUP
TOPO	304-00-52 3" POPUP
TOPO	304-00-53 3" POPUP
TOPO	304-00-54 3" POPUP
TOPO	304-00-55 3" POPUP
TOPO	304-00-56 3" POPUP
TOPO	304-00-57 3" POPUP
TOPO	304-00-58 3" POPUP
TOPO	304-00-59 3" POPUP
TOPO	304-00-60 3" POPUP
TOPO	304-00-61 3" POPUP
TOPO	304-00-62 3" POPUP
TOPO	304-00-63 3" POPUP
TOPO	304-00-64 3" POPUP
TOPO	304-00-65 3" POPUP
TOPO	304-00-66 3" POPUP
TOPO	304-00-67 3" POPUP
TOPO	304-00-68 3" POPUP
TOPO	304-00-69 3" POPUP
TOPO	304-00-70 3" POPUP
TOPO	304-00-71 3" POPUP
TOPO	304-00-72 3" POPUP
TOPO	304-00-73 3" POPUP
TOPO	304-00-74 3" POPUP
TOPO	304-00-75 3" POPUP
TOPO	304-00-76 3" POPUP
TOPO	304-00-77 3" POPUP
TOPO	304-00-78 3" POPUP
TOPO	304-00-79 3" POPUP
TOPO	304-00-80 3" POPUP
TOPO	304-00-81 3" POPUP
TOPO	304-00-82 3" POPUP
TOPO	304-00-83 3" POPUP
TOPO	304-00-84 3" POPUP
TOPO	304-00-85 3" POPUP
TOPO	304-00-86 3" POPUP
TOPO	304-00-87 3" POPUP
TOPO	304-00-88 3" POPUP
TOPO	304-00-89 3" POPUP
TOPO	304-00-90 3" POPUP
TOPO	304-00-91 3" POPUP
TOPO	304-00-92 3" POPUP
TOPO	304-00-93 3" POPUP
TOPO	304-00-94 3" POPUP
TOPO	304-00-95 3" POPUP
TOPO	304-00-96 3" POPUP
TOPO	304-00-97 3" POPUP
TOPO	304-00-98 3" POPUP
TOPO	304-00-99 3" POPUP
TOPO	304-00-100 3" POPUP

Irrigation Plan
SCALE: 1/8" = 1'-0"



- NOTES
1. SOAKPIT MUST BE GRADED 1" BELOW GROUND SURFACE OR AS INDICATED ON GRADING PLAN WITH 3% SLOPE TO THE SOAKPIT.
2. SEE SHEET NO. 2 FOR PLANTING DETAILS.

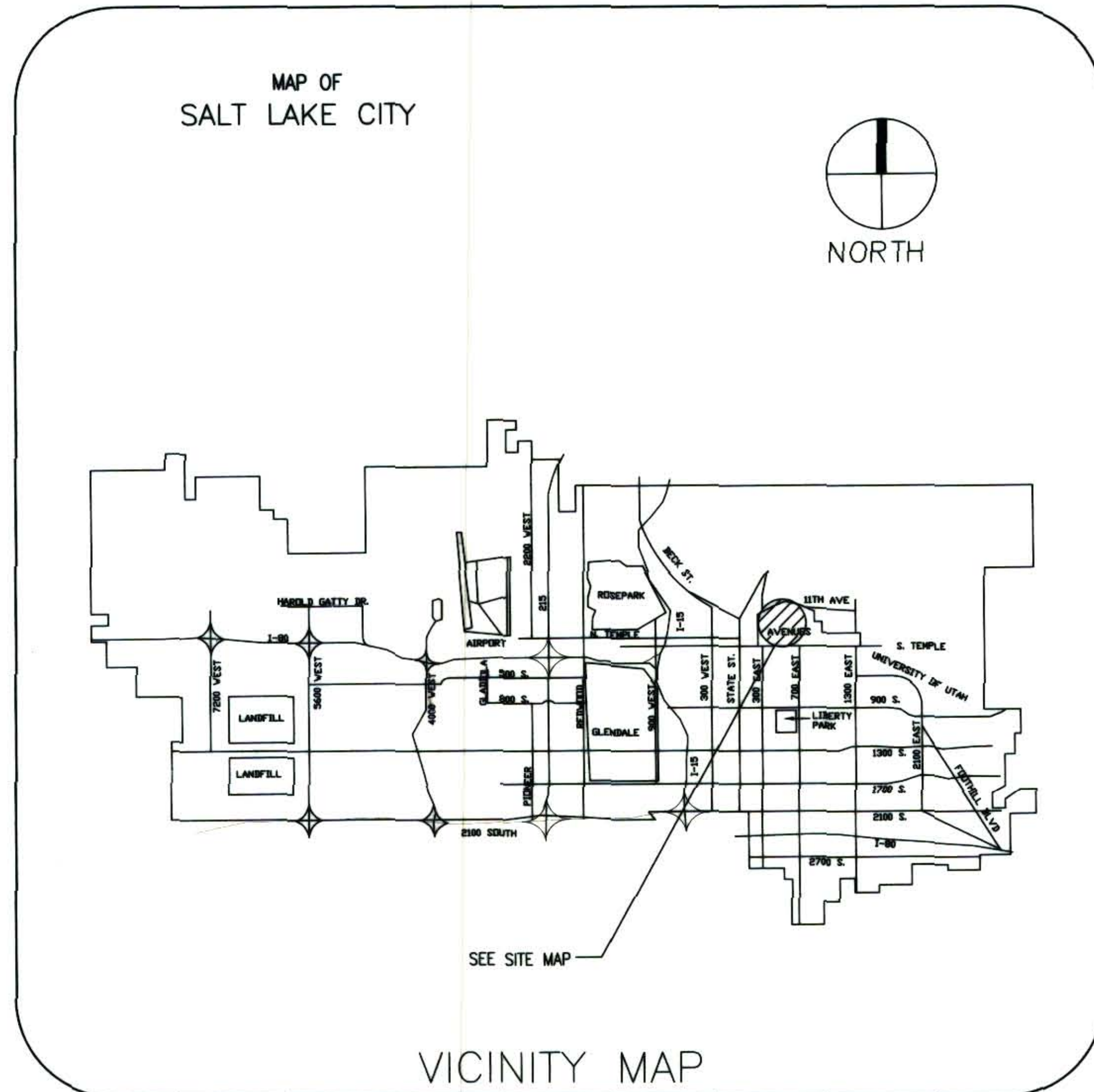
SYMBOL	BOTANICAL NAME	COMMON NAME	SIZE
	TREES		
D	NIC	NORWAY SPRUCE	2 GAL.
	SHRUBS		
C	15	WILLOW BARK	5 GAL.
E	22	WILLOW BARK	5 GAL.
F	23	WILLOW BARK	5 GAL.
G	24	WILLOW BARK	5 GAL.
H	D	WILLOW BARK	5 GAL.
	VINES		
I	E	WILLOW BARK	5 GAL.

Planting Plan
SCALE: 1/8" = 1'-0"

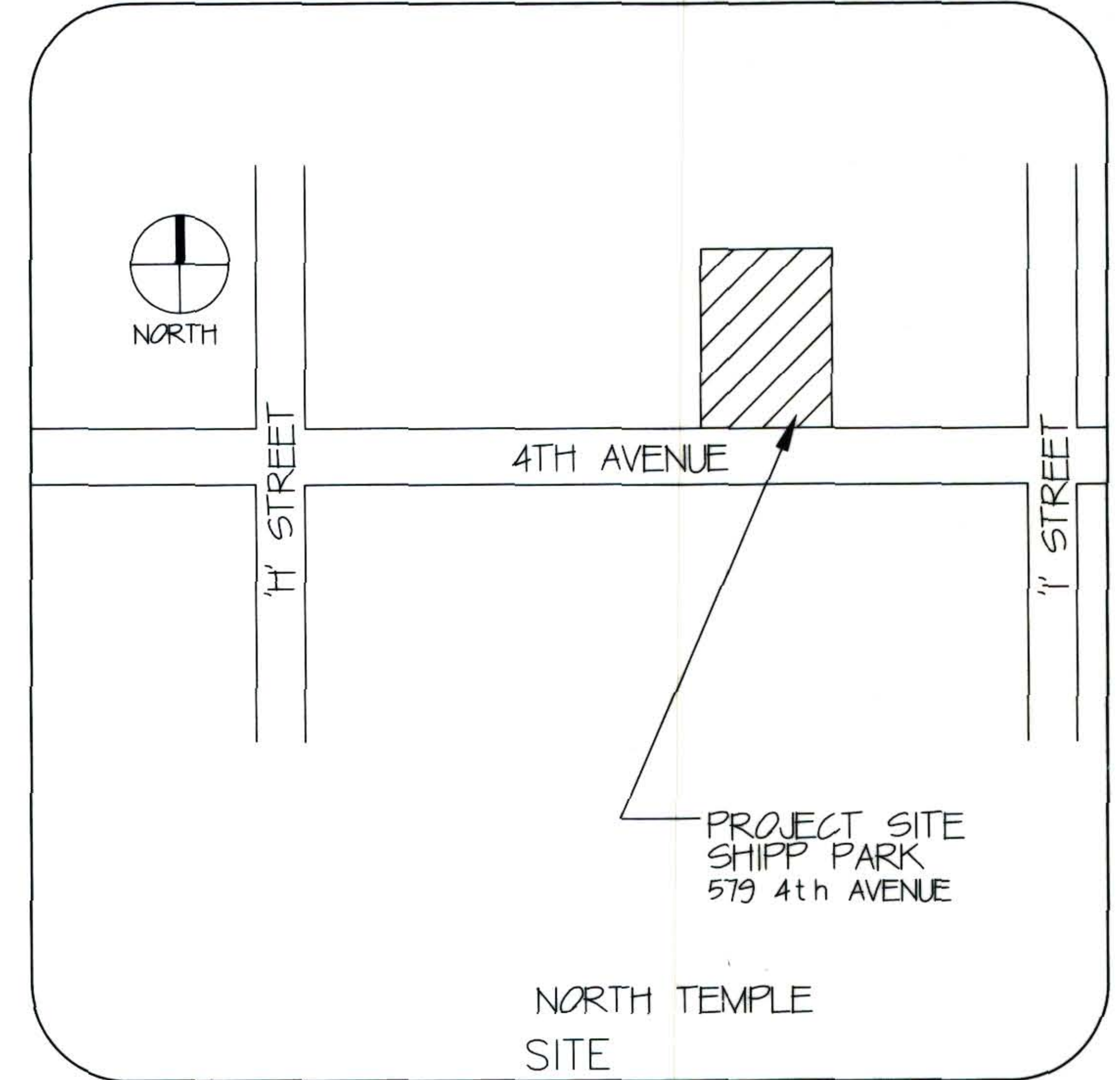
REVISIONS	DESIGN	DRAWN	CHECKED

AVENUE'S MINI PARK
581 EAST 4TH AVENUE
SALT LAKE CITY, UTAH

SALT LAKE CITY CORPORATION



CONSTRUCTION PLANS FOR:
 SHIPP PARK ADA
 PLAYGROUND IMPROVEMENTS
 579 4TH AVENUE
 JOB NO. 251601



MAYOR RALPH BECKER

CITY COUNCIL

DIST. 1	CARLTON J. CHRISTENSEN
DIST. 2	VAN BLAIR TURNER
DIST. 3	ERIC JERGENSEN
DIST. 4	LUKE GARROTT
DIST. 5	JILL REMINGTON LOVE
DIST. 6	J. T. MARTIN
DIST. 7	SOREN D. SIMONSEN

INDEX OF DRAWINGS

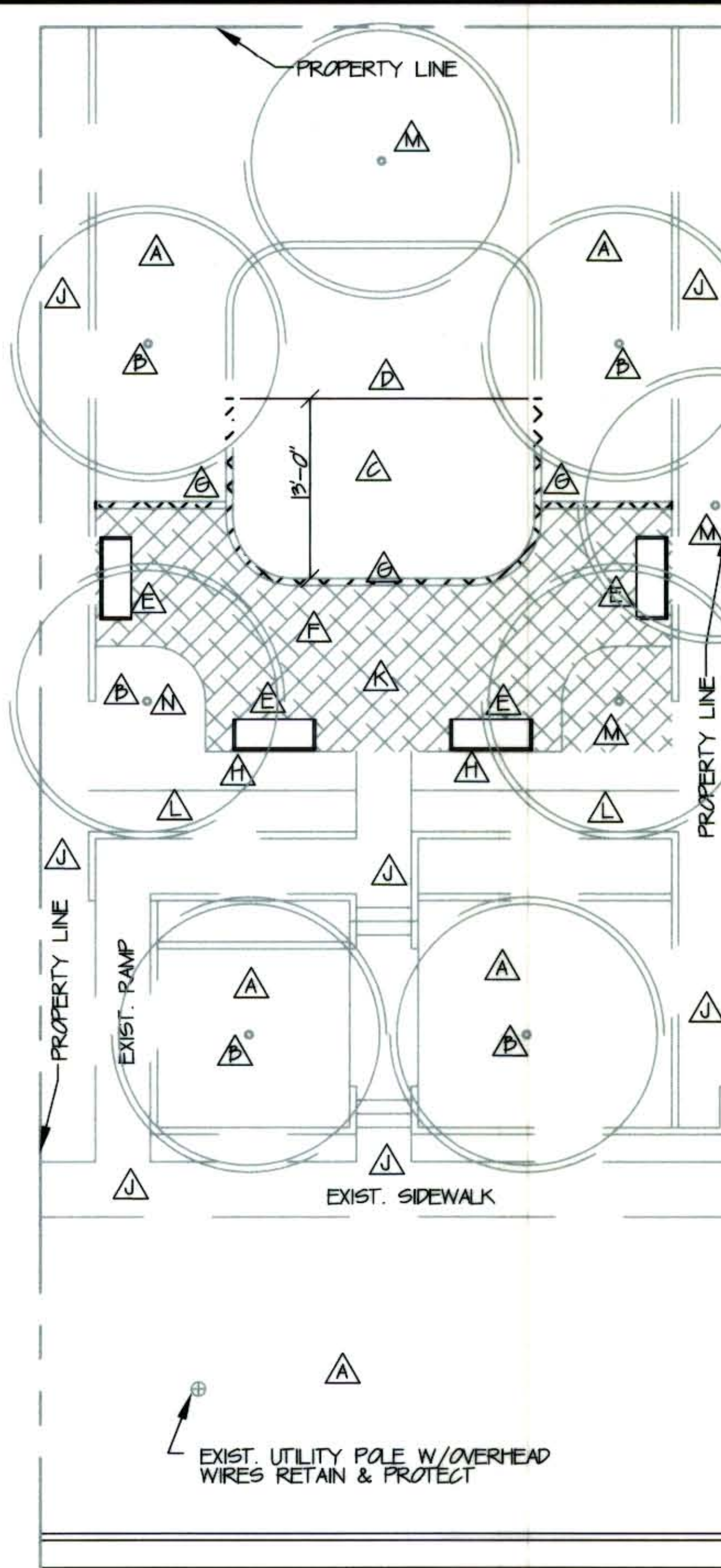
DRAWING NO.	DRAWING TITLE
G-001	COVER SHEET
LS101	DEMOLITION/LAYOUT PLANS/DETAILS
LS102	IRRIGATION/LANDSCAPE RENOVATION/DETAILS

DEPARTMENT OF PUBLIC SERVICES

DIRECTOR	RICK GRAHAM
CITY ENGINEER	MAX G. PETERSON, P.E.
DESIGNED BY	ENGINEERING DIVISION 324 SOUTH STATE STREET SUITE 310 SALT LAKE CITY, UTAH 84111

**RECORD
 DOCUMENT**

CITY ENGINEER MAX G. PETERSON, P.E. 4-3-09 DATE	PROJECT MANAGER DELL COOK, ASLA 4/03/09 DATE	PROJECT DESIGNER RON SALISBURY, ASLA 4/03/09 DATE	PLANNING DIVISION N/A APPROVED BY DATE	DEPT. OF PUBLIC UTILITIES N/A APPROVED BY DATE	URBAN FORESTRY BILL RUTHERFORD 4-3-09 DATE	PARKS DIVISION DIRECTOR VAL POPE 4-3-09 DATE	VAULT NO. 20080098 JOB NO. 251601 SHEET NO. 1 OF 2 SHEETS DRAWING NO. G-001
--	---	--	---	---	---	---	--

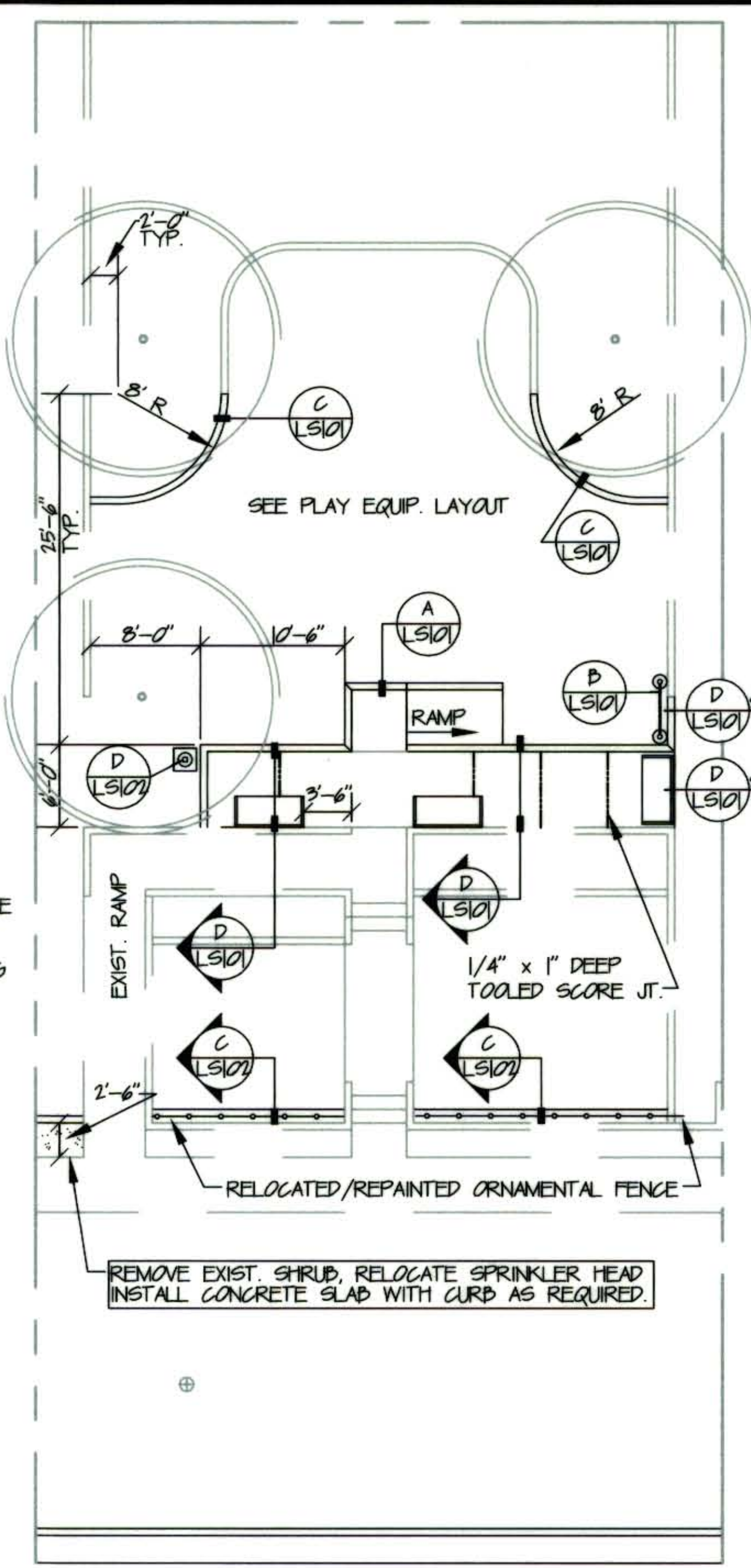


EXIST. COND./DEMOLITION

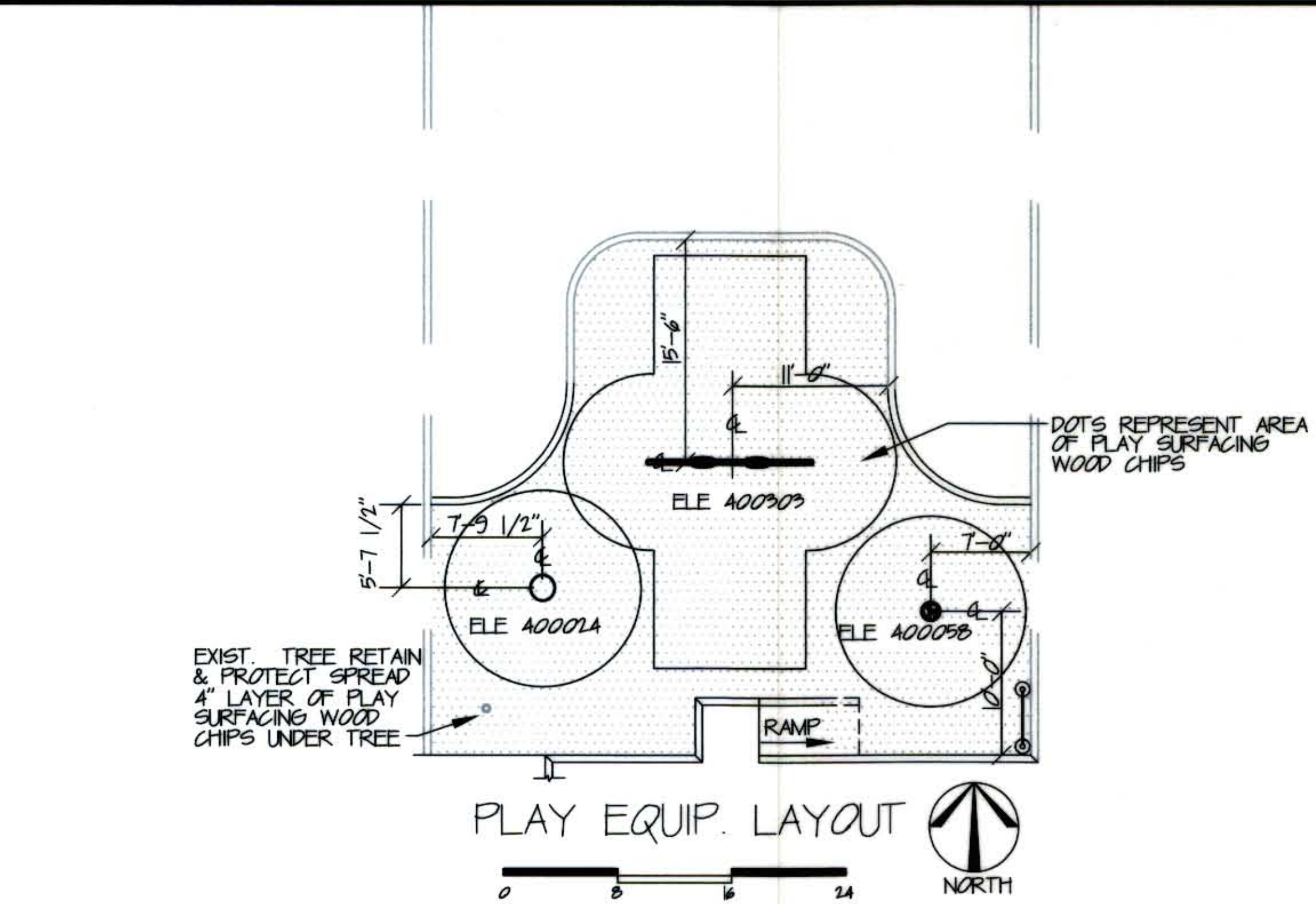
GENERAL CONSTRUCTION NOTES

- ▲ RETAIN & PROTECT EXIST. LAWN AND IRRIGATION SYSTEM SEE IRRIG. AND LANDSCAPE RENOVATION PLAN
- ▲ RETAIN & PROTECT EXIST. TREES PRUNE EXIST. TREES TO REMAIN AS DIRECTED BY SALT LAKE CITY URBAN FORESTRY OFFICE
- ▲ REMOVE AND DISPOSE OF EXIST. SAND/SOIL TO A DEPTH OF 22" BELOW TOP OF CURB REUSE SOME SAND SEE IRRIG./LANDSCAPE RENOVATION PLAN
- ▲ REMOVE AND DISPOSE OF EXIST. PLAY EQUIPMENT INCLUDING FTGS. SEE BID ALT. NO. 1
- ▲ REMOVE (4) EXIST. BENCHES SANDBLAST, PRIME, PROVIDE POWDER COAT PAINT FINISH AND RELOCATE (2) BENCHES RETURN (2) REMOVED BENCHES TO OWNER
- ▲ REMOVE AND DISPOSE OF EXIST. CONC. AND SOIL TO A DEPTH OF 22" BELOW TOP OF EXIST. PLAY CURB
- ▲ REMOVE AND DISPOSE OF EXIST. CONC. CURB SHOWN HATCHED REMOVE SOIL FOR NEW CURB/WALL
- ▲ REMOVE SHRUBS, AND IRRIG. FOR NEW CONC. SLAB REMOVE SOIL TO DEPTH OF 8" BELOW TOP OF EXIST. PLAY CURB
- ▲ RETAIN & PROTECT EXIST. WALKS, WALLS, STAIRS, RAMP, SHRUBS, AND IRRIGATION SYSTEM
- ▲ RELOCATE/REFINISH EXIST. SHIPP PARK PLAQUE SEE DETAIL D/LS101 PHOTO AVAILABLE THROUGH UTAH STATE HISTORICAL SOCIETY
- ▲ REMOVE EXIST. ORNAMENTAL FENCE INCLUDING FTGS. SANDBLAST, PRIME, PROVIDE POWDER COAT PAINT FINISH AND RELOCATE ALL BUT ONE SECTION OF FENCE. RETURN UNUSED SECTION OF FENCE TO OWNER SEE DETAIL C/LS101
- ▲ REMOVE AND DISPOSE OF (3) EXIST. TREES, GRIND STUMPS REMOVE GRINDINGS
- ▲ LIMIT EXCAVATION NEXT TO TREE EXCAVE TO EXTENT OF FALL SAFETY ZONE SEE PLAY EQUIP. LAYOUT

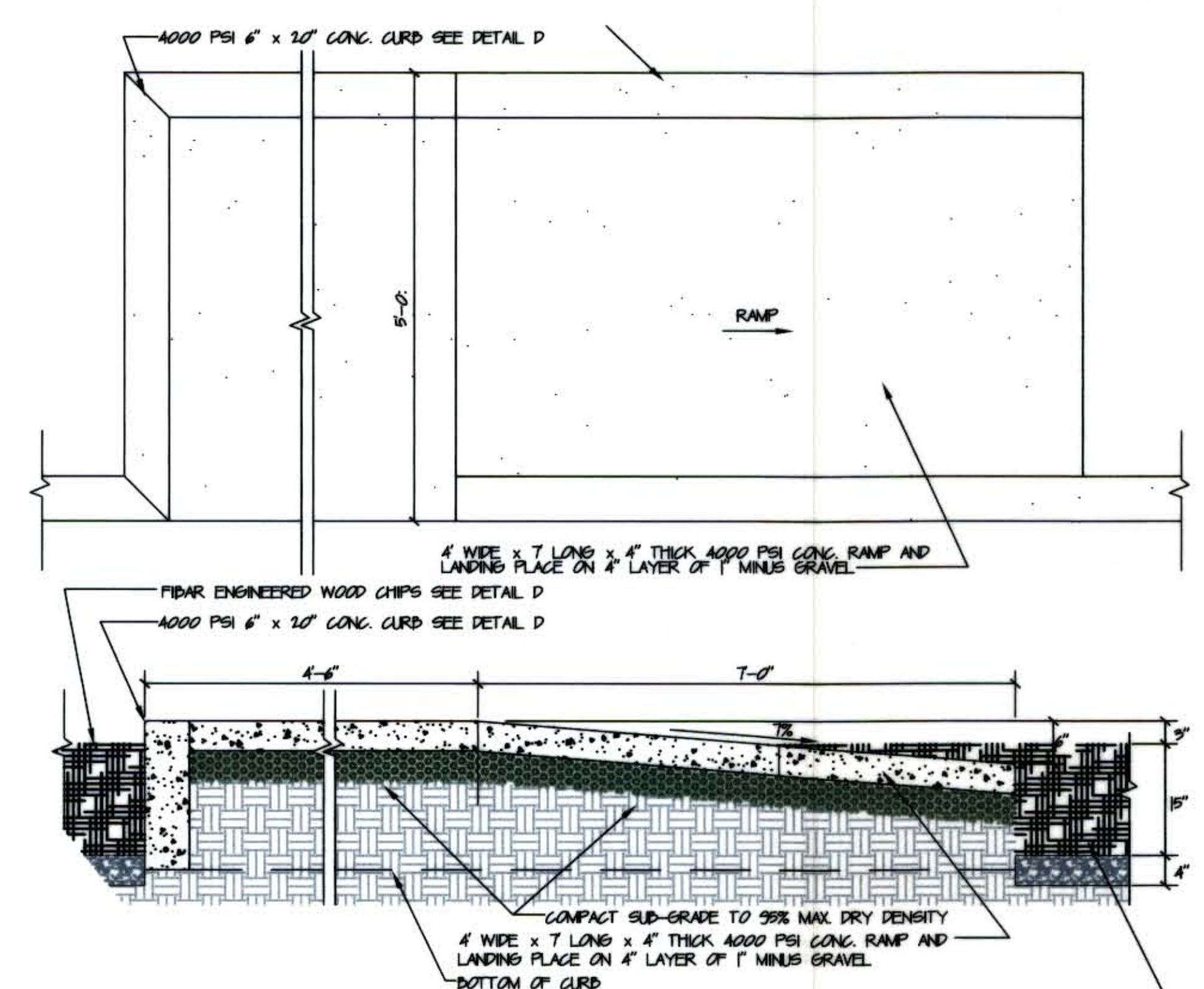
NOTE:
CONTRACTOR SHALL REPLACE ALL ITEMS DAMAGED DURING CONSTRUCTION



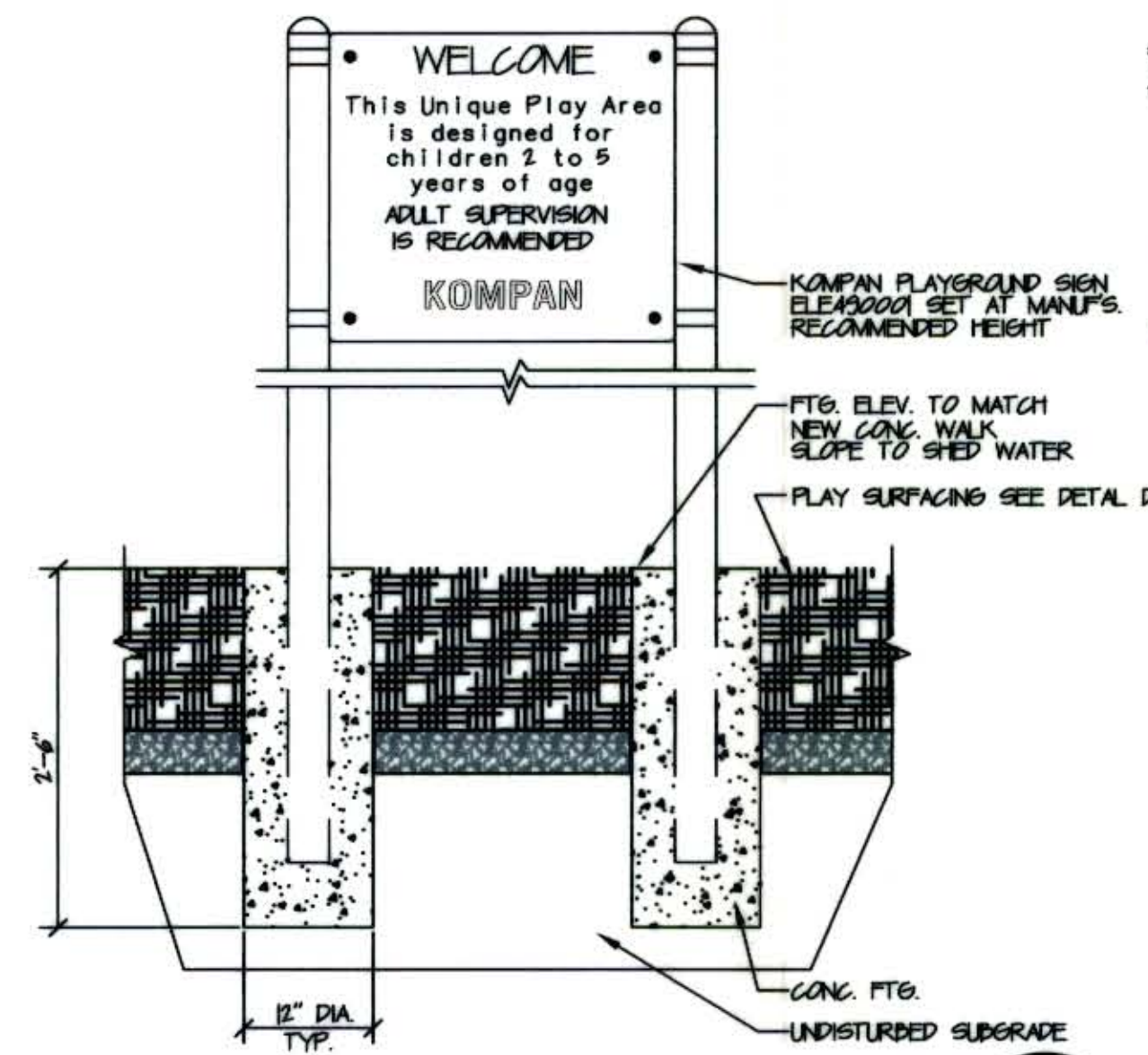
LAYOUT PLAN



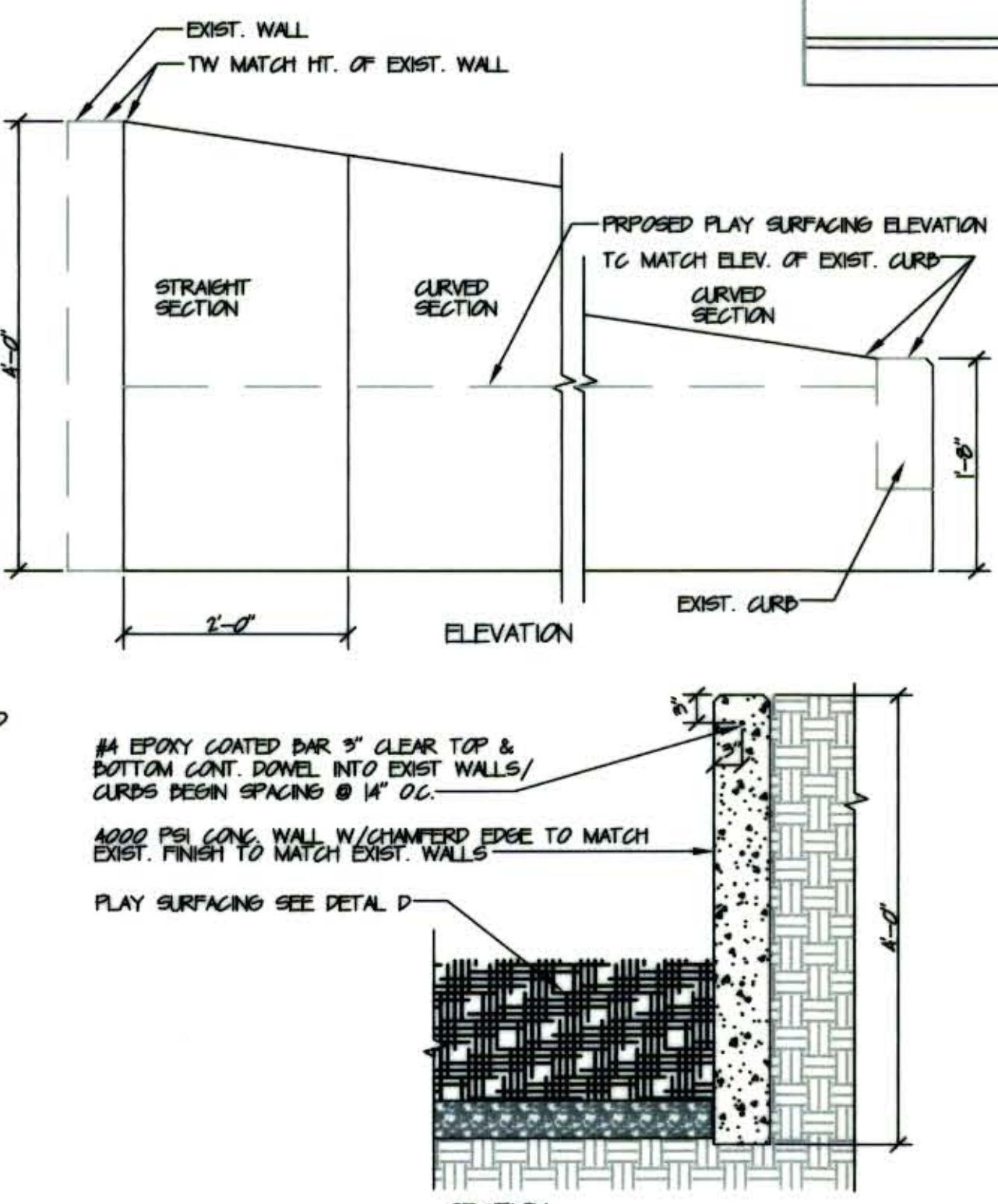
PLAY EQUIP. LAYOUT



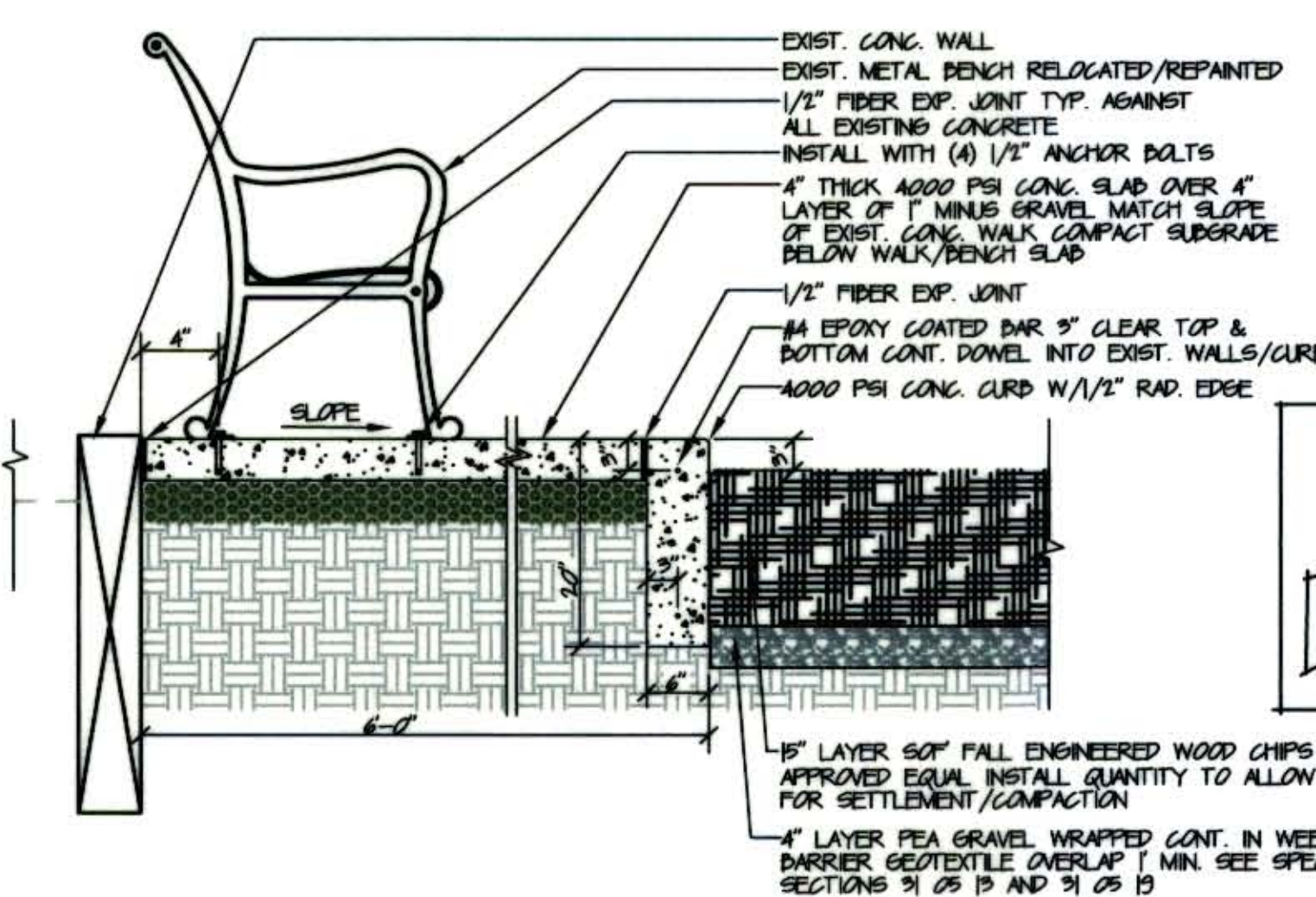
PLAY SURFACING RAMP DETAIL



PLAY SIGN DETAIL

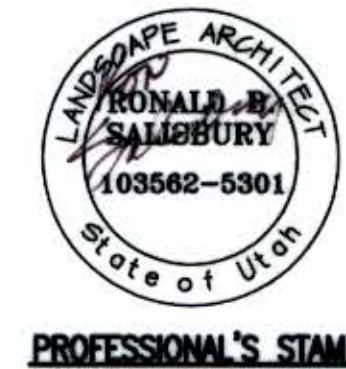


SLOPING CONCRETE WALL DETAIL

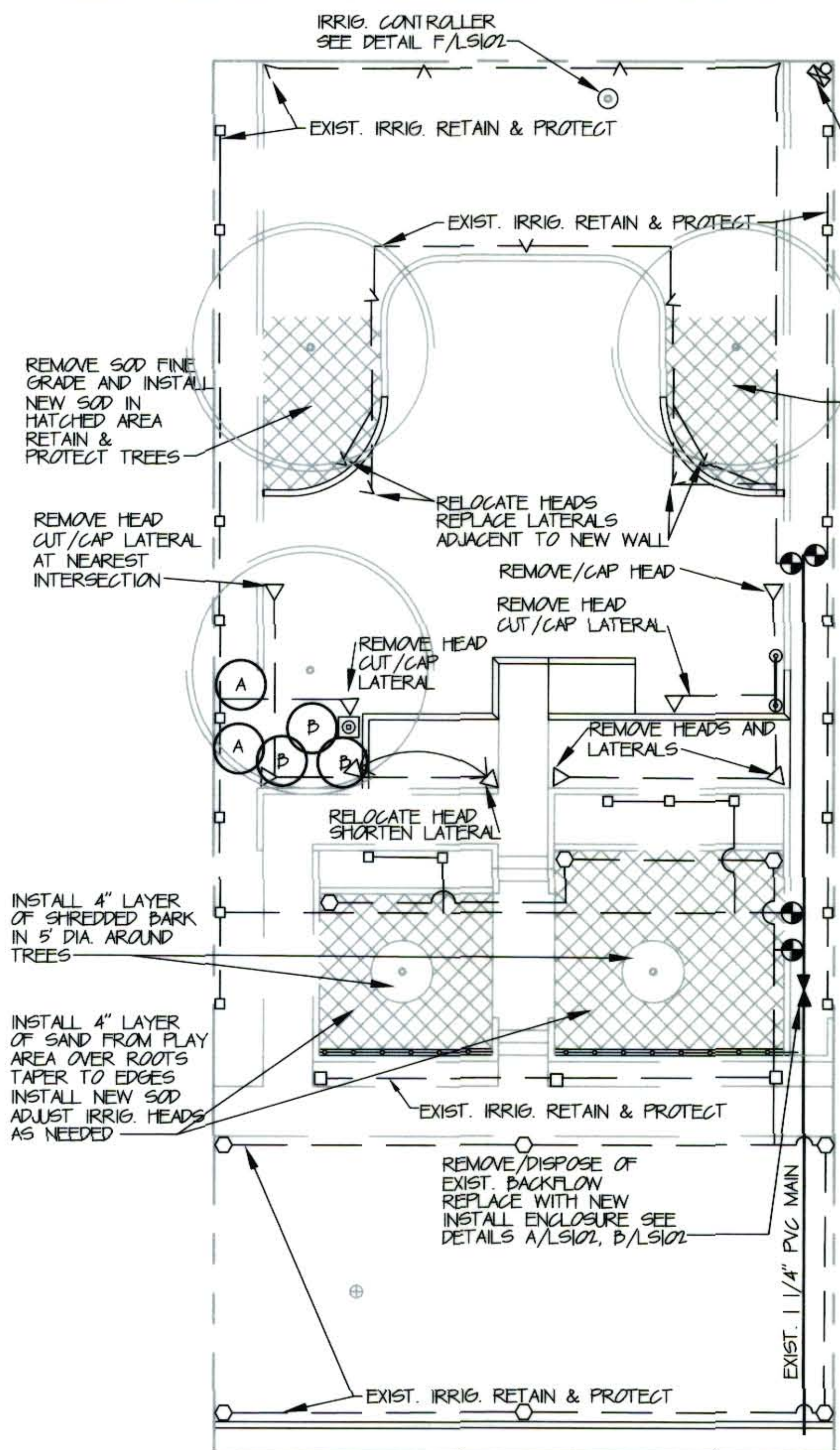


CONCRETE AND PLAY SURFACING/BENCH DETAIL

RECORD DOCUMENT



SALT LAKE CITY CORPORATION ENGINEERING DIVISION	
SHIPP PARK ADA PLAYGROUND IMPROVEMENTS	
DEMOLITION/LAYOUT	
DATE DESIGNED BY DRAWN BY CHECKED BY	APR. 2009 R. SALISBURY R. SALISBURY D. COOK
SCALE HORIZ VERT	N/A AS SHOWN
SHEET 2 OF 3 SHEETS	JOB NO. 251601 DRAWING ID LS101
	Vault No. 20080038



IRRIGATION/LANDSCAPE RENOVATION



PANEL NOTES

FURNISH AND INSTALL (1) 2 POLE, 20 AMP. ELECTRICALLY HELD CONTACTOR.

GENERAL NOTES

INSTALL NEW IRRIGATION CONTROLLER, SURGE ARRESTER, INSIDE EXIST. ENCLOSURE. CONTRACTOR SHALL SUPPLY AND INSTALL GROUNDING ROD FOR IRRIGATION CONTROLLER. AS PER DETAIL F/LS102. GROUNDING FROM IRRIGATION TO BE NEG COMPLIANT. CONTRACTOR SHALL NOT DISTURB EXIST. UTILITY GROUNDING.

IRRIG. SUPPLY AND INSTALLATION NOTES

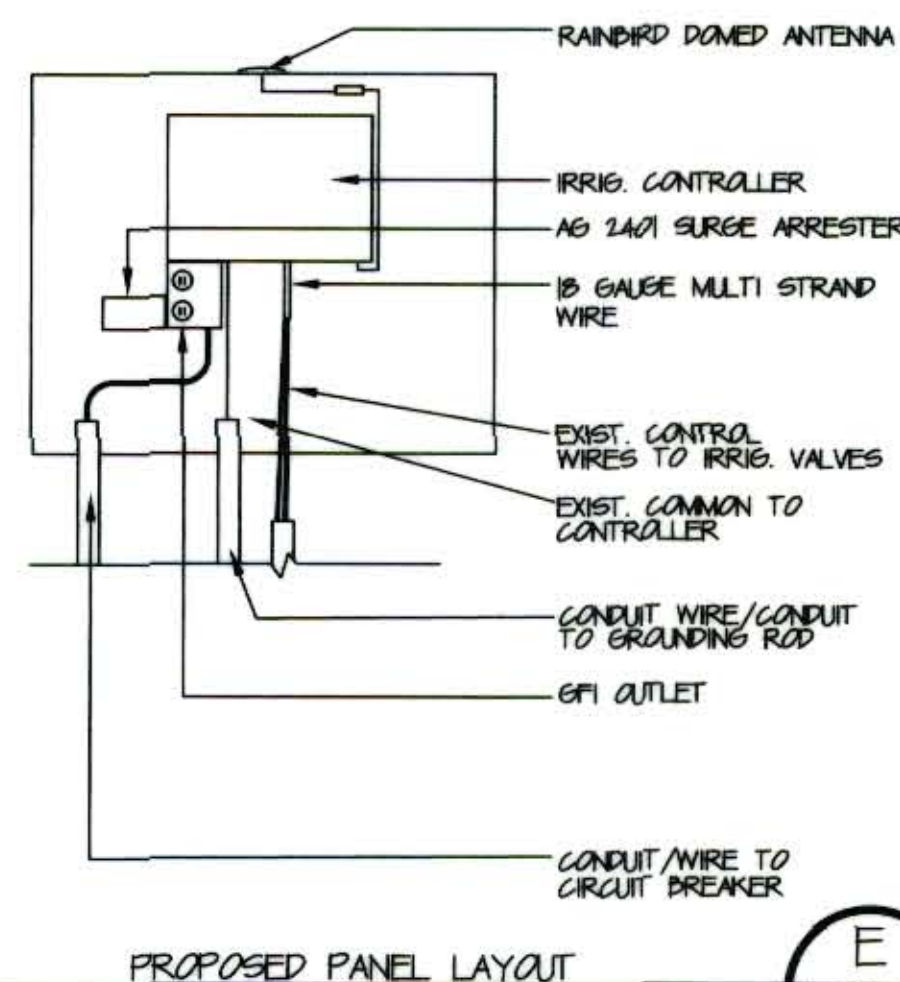
RAINBIRD ESP-12SAT-LIN CONTROLLER LINK READY AG 2401 SURGE ARRESTER.

CONTRACTOR SHALL SUPPLY THE FOLLOWING ITEMS WHICH WILL BE INSTALLED BY THE OWNER. ALL OTHER ITEMS FOR THE COMPLETE AND OPERATIONAL IRRIGATION SYSTEM SHALL BE SUPPLIED AND INSTALLED BY THE CONTRACTOR:

- RADIO TRC
- RAINBIRD DOME ANTENNA
- RNK 450 RADIO WAVE LINK RADIO KIT
- 1" FLOOR MOUNTING BRACKETS & 2"x12" NIPPLE & 1/2" SLIP CAP SCH. 40
- PT922 PULSE TRANSMITTER AS REQUIRED IF 1" FLOW SENSOR IS USED
- COMMUNICATION CABLE DPY'S BURIED SERVICE & PAIR WIRE KIT

PANEL LAYOUT DETAIL

NTS

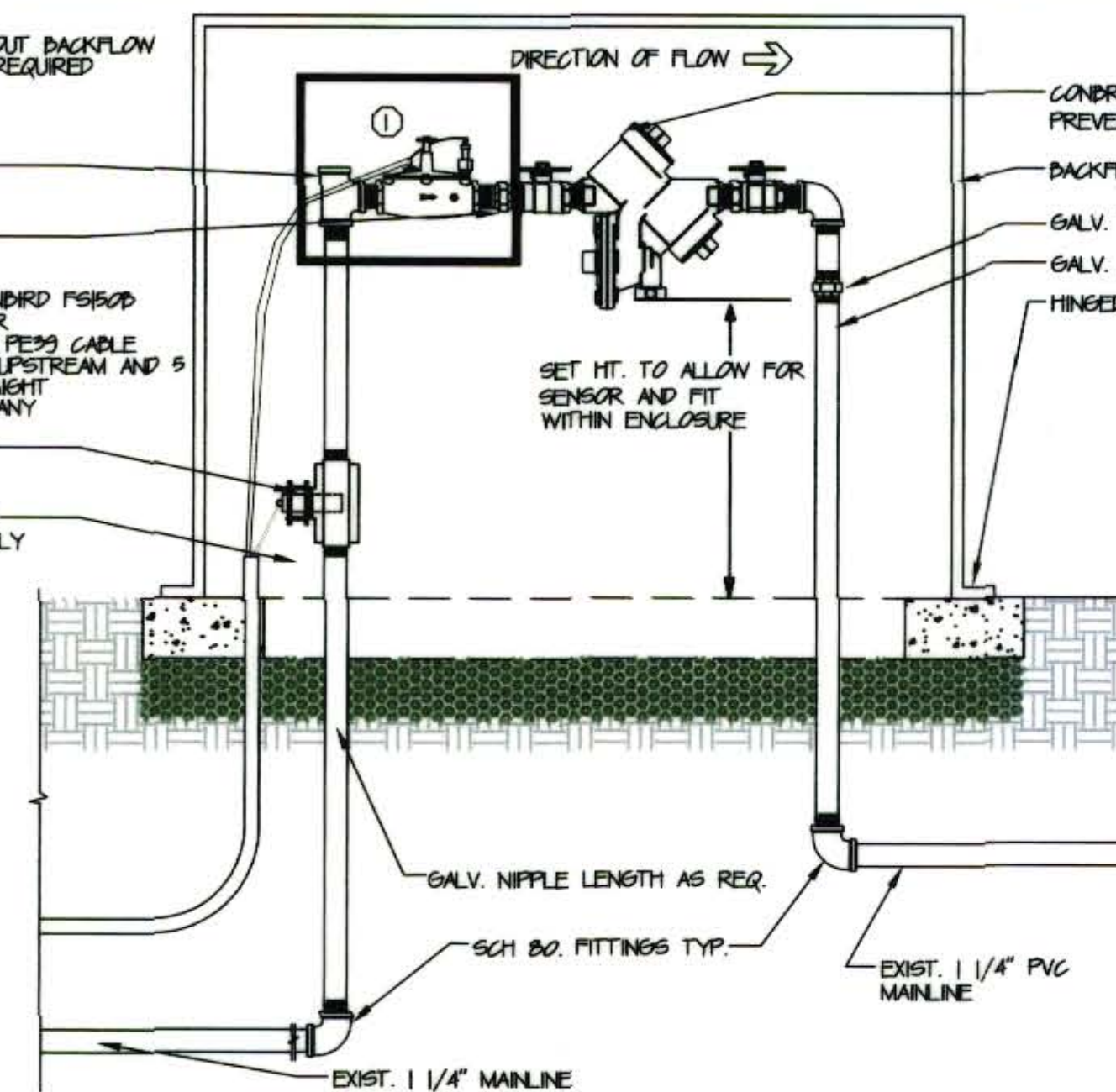


PROPOSED PANEL LAYOUT

E
LS102

NOTE:
USE GALV. NIPPLES THROUGHOUT BACKFLOW ASSEMBLY TYP. LENGTH AS REQUIRED.

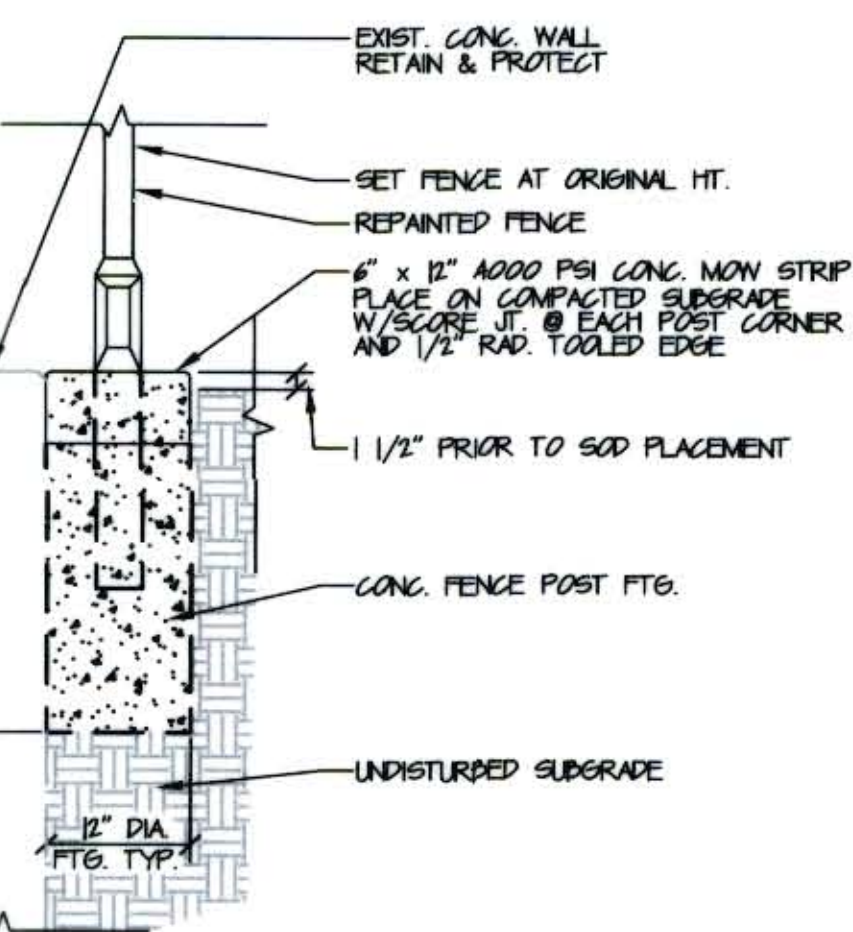
GALV. TEE WITH PLUG
GALV. THREADED UNION
BRASS FLOW SENSOR - RAINBIRD P5150D W/PT922 PULSE TRANSMITTER. CONNECTING WIRE SHALL BE PEES CABLE. INSTALL AT LEAST 12" DIA. UPSTREAM AND 5" X DIA. DOWNSTREAM OF STRAIGHT UNINTERRUPTED FLOW FROM ANY MAIN LINE FITTINGS. USE GALV. BUSHINGS.
MAINTAIN 8" MIN. CLEARANCE BETWEEN BACKFLOW ASSEMBLY AND ENCLOSURE.



BACKFLOW PREVENTER/MASTER VALVE/FLOW SENSOR

NTS

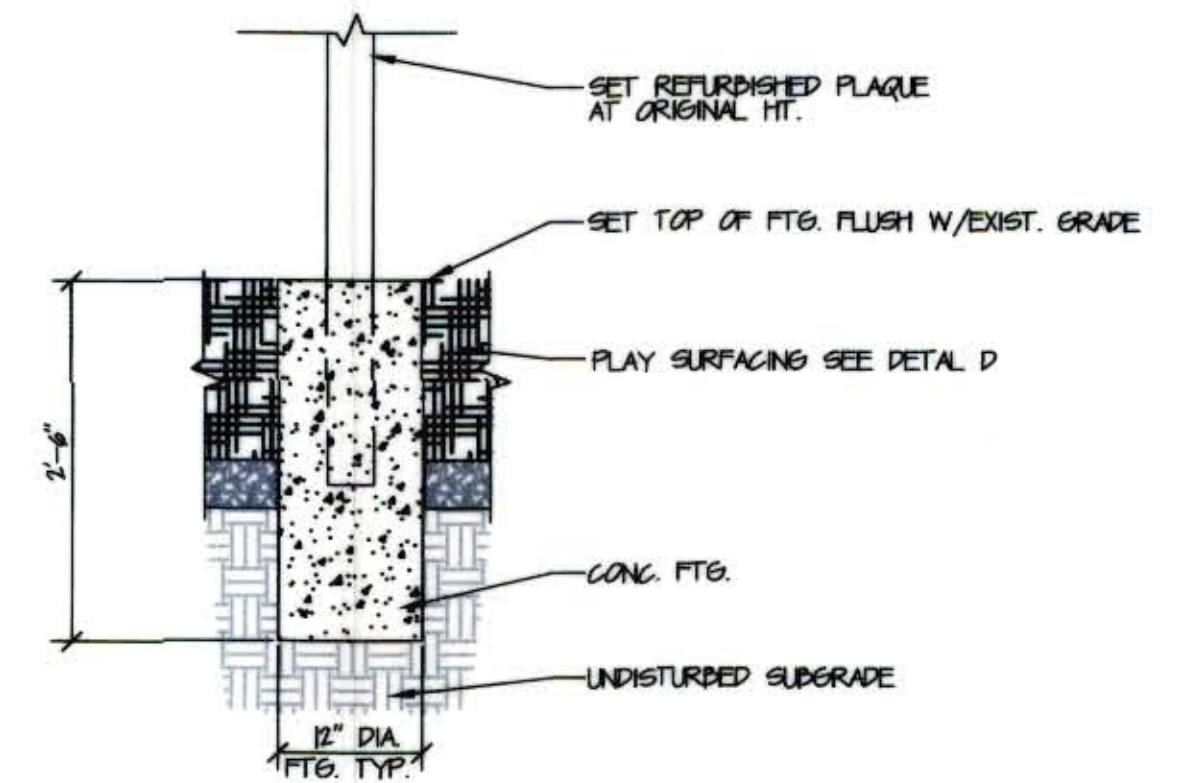
A
LS102



ORNAMENTAL FENCE MOWSTRIP

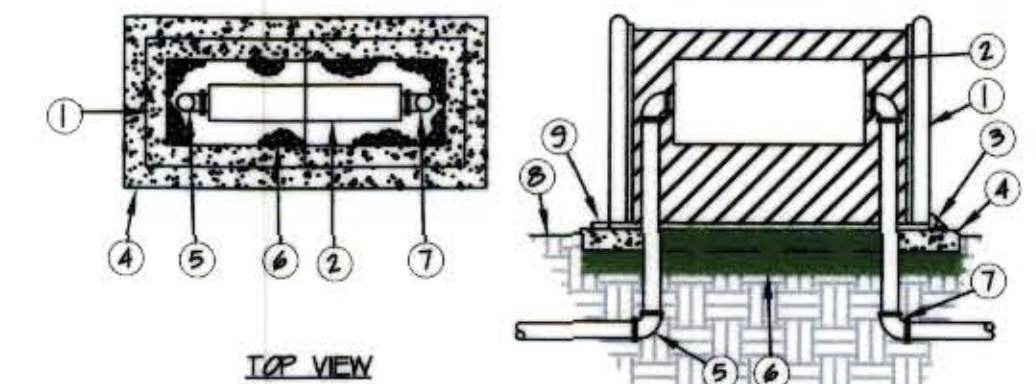
NTS

C
LS102



REFINISHED PERMALOY PLAQUE

D
LS102



- LEGEND**
- BACKFLOW ENCLOSURE DPPI GUARD SHACK MODEL NO. 06-4 (WOODLAND GREEN)
 - BACKFLOW PREVENTER SEE DETAIL A
 - HINGE (TYPICAL) ENDED "J" BOLTS WHEN PLACING CONCRETE
 - POURED CONCRETE BASE - 4" MINIMUM THICKNESS - EXTEND 12" BEYOND OUTSIDE DIMENSIONS OF ENCLOSURE ALL SIDES.
 - WATER SERVICE INLET PIPING
 - 1" MINUS GRAVEL 1" LAYER BENEATH CONCRETE 12" LAYER BENEATH BACKFLOW
 - WATER SERVICE OUTLET PIPING
 - FINISH GRADE TO BE 4" BELOW TOP OF CONCRETE BASE
 - BRACKET W/SLOT FOR EYE BOLT (TYPICAL)

BACKFLOW ENCLOSURE DETAIL

NTS

B
LS102

RECORD DOCUMENT

**SALT LAKE CITY CORPORATION
ENGINEERING DIVISION**

**SHIPP PARK
ADA PLAYGROUND IMPROVEMENTS**

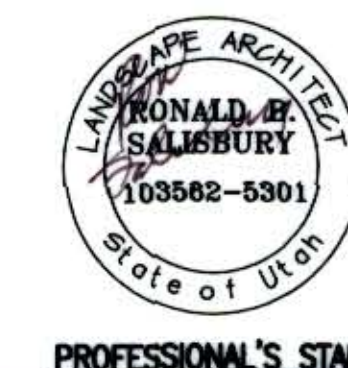
IRRIGATION/LANDSCAPE

DATE: MAR. 2009
DESIGNED BY: R. SALISBURY
DRAWN BY: R. SALISBURY
CHECKED BY: D. COOK
SCALE: HORIZ AS SHOWN
VERT N/A
SHEET 3 OF 3 SHEETS

JOB NO.
251601

DRAWING ID
LS102

VAULT NO.
20080038



PROFESSIONAL'S STAMP

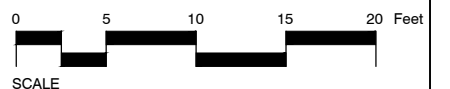


Imagery taken from AGRC's High Resolution Ortho-Photography (HRO) 6-inch resolution color aerial photography, 2012.

CALLOUT_DESCRIPTIONS

- ① SPINNER TOP ② PLAQUE ③ BENCH ④ IRON FENCE ⑤ SWING SET ⑥ KOMPAN SIGN

- APPROXIMATE PARK BOUNDARY PARCEL BOUNDARY



SALT LAKE CITY

Shipp Park

579 4th Avenue

SALT LAKE COUNTY

UTAH

SALT LAKE CITY
HISTORIC LANDSCAPES REPORT
SLCHLR NO. 12

SHEET 1 OF 1